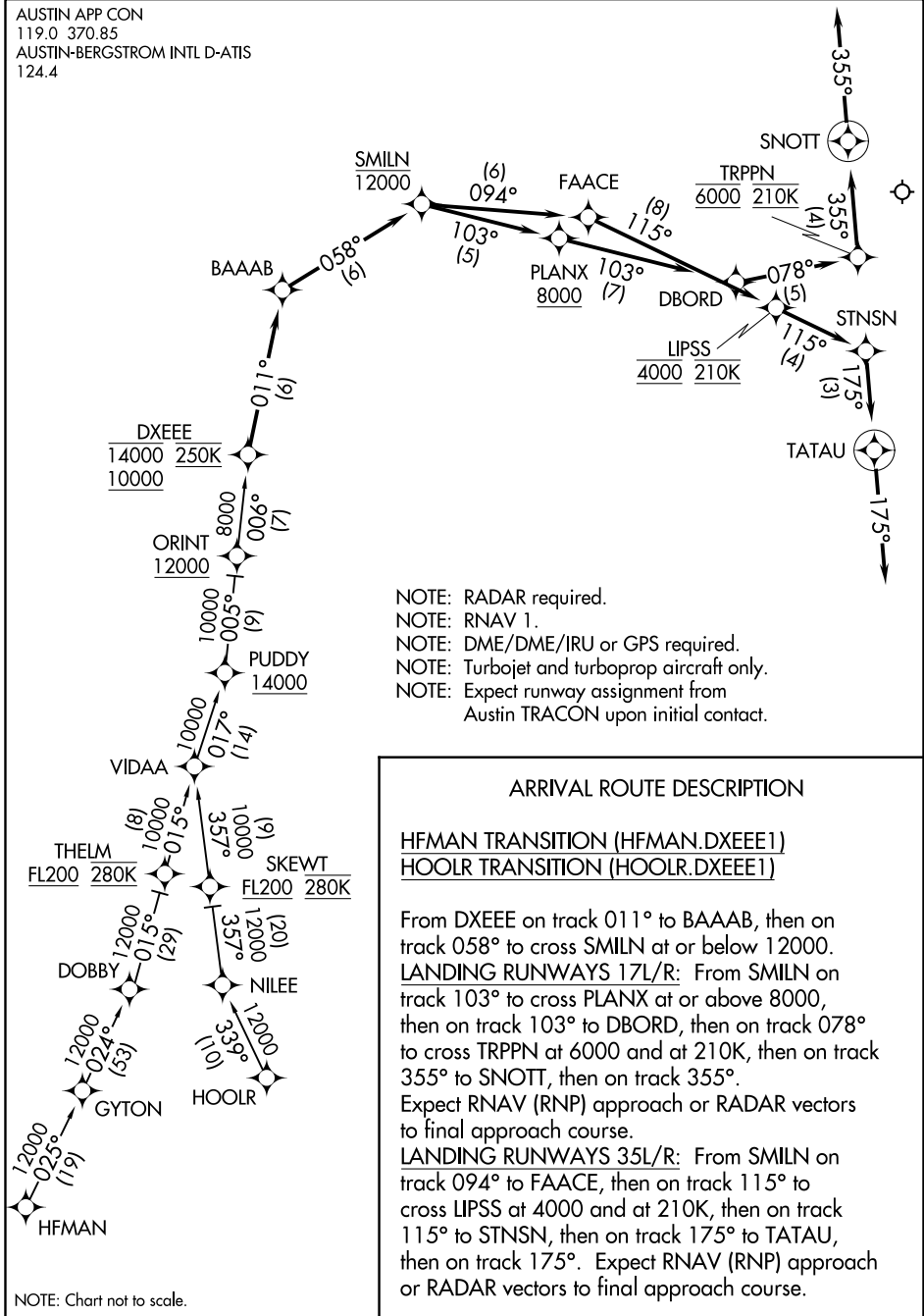


# DXEE ONE ARRIVAL (RNAV)

AUSTIN APP CON  
119.0 370.85  
AUSTIN-BERGSTROM INTL D-ATIS  
124.4



NOTE: RADAR required.  
 NOTE: RNAV 1.  
 NOTE: DME/DME/IRU or GPS required.  
 NOTE: Turbojet and turboprop aircraft only.  
 NOTE: Expect runway assignment from Austin TRACON upon initial contact.

### ARRIVAL ROUTE DESCRIPTION

HFMAN TRANSITION (HFMAN.DXEE1)  
HOOLR TRANSITION (HOOLR.DXEE1)

From DXEE on track 011° to BAAAB, then on track 058° to cross SMILN at or below 12000. **LANDING RUNWAYS 17L/R:** From SMILN on track 103° to cross PLANX at or above 8000, then on track 103° to DBORD, then on track 078° to cross TRPPN at 6000 and at 210K, then on track 355° to SNOTT, then on track 355°. Expect RNAV (RNP) approach or RADAR vectors to final approach course.

**LANDING RUNWAYS 35L/R:** From SMILN on track 094° to FAACE, then on track 115° to cross LIPSS at 4000 and at 210K, then on track 115° to STNSN, then on track 175° to TATAU, then on track 175°. Expect RNAV (RNP) approach or RADAR vectors to final approach course.

NOTE: Chart not to scale.

SC-3, 15 AUG 2019 to 12 SEP 2019

SC-3, 15 AUG 2019 to 12 SEP 2019