

LOC/DME I-VNK 110.5 Chan 42	APP CRS 175°	Rwy Idg 9000 TDZE 492 Apt Elev 542
---	------------------------	---

ILS RWY 17L (CAT II & III) AUSTIN-BERGSTROM INTL (AUS)

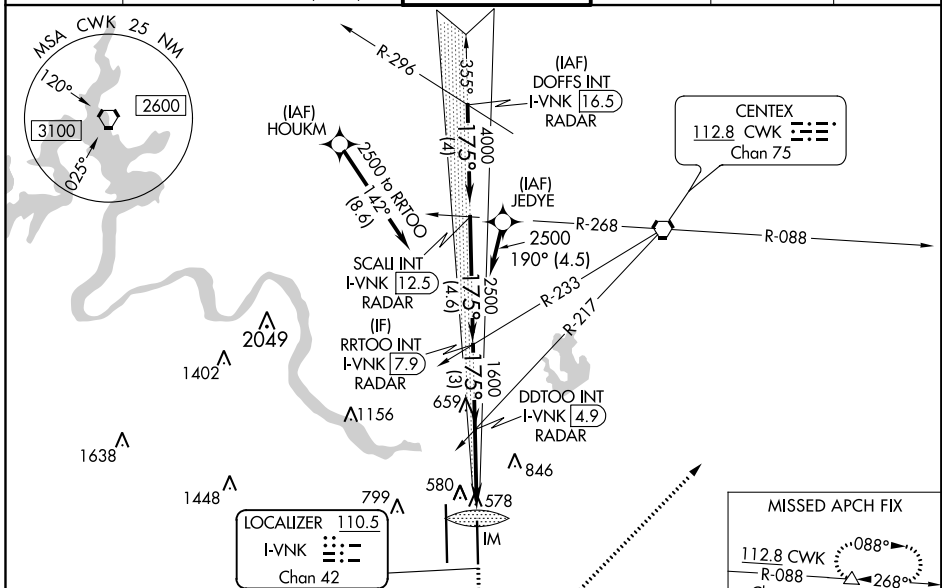
RNAV 1- GPS or RADAR required for procedure entry.
DME required.
From HOUKM, JEDYE: RNAV 1- GPS required.



MISSED APPROACH: Climb to 1000, then climbing left turn to 3000 heading 040° and CWK VORTAC R-088 to HOOKK/CWK 17 DME and hold.

Simultaneous approach authorized.

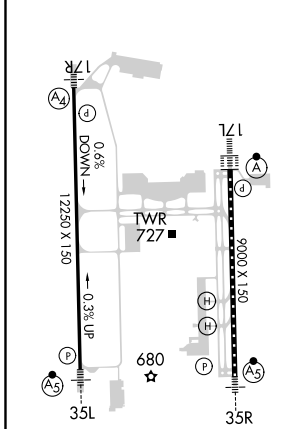
D-ATIS 124.4	AUSTIN APP CON 127.225 317.65 (EAST) 120.875 270.25 (SOUTH) 119.0 370.85 (WEST)	AUSTIN TOWER 121.0 281.5	GND CON 121.9 348.6	CLNC DEL 125.5 263.0	CPDLC
------------------------	---	------------------------------------	-------------------------------	--------------------------------	-------



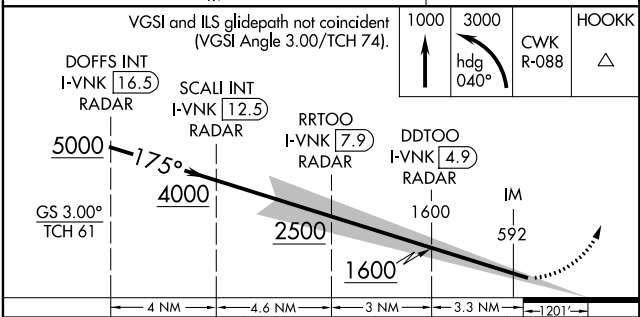
SC-3, 15 AUG 2019 to 12 SEP 2019

SC-3, 15 AUG 2019 to 12 SEP 2019

ELEV 542	D	TDZE 492
----------	----------	----------



TDZ/CL Rwy 17L and 35R
HIRL Rwy 17L-35R and 17R-35L



CATEGORY	A	B	C	D
S-ILS 17L	CAT II RA 105/12 100 DA 592			
S-ILS 17L	CAT III RVR 06			

CATEGORY II & III ILS - SPECIAL AIRCREW & AIRCRAFT CERTIFICATION REQUIRED