

LOC/DME I-VNK 110.5 Chan 42	APP CRS 175°	Rwy Idg 9000 TDZE 492 Apt Elev 542
-------------------------------------------------	------------------------	---------------------------------------------------------------

ILS RWY 17L (SA CAT I)

AUSTIN-BERGSTROM INTL (AUS)

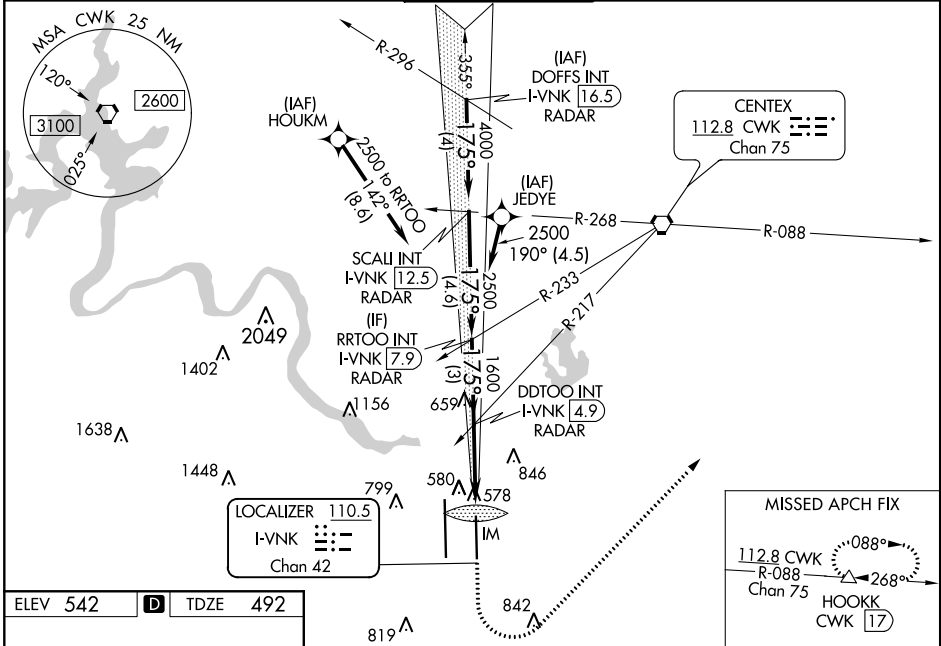
RNAV 1- GPS or RADAR required for procedure entry.
DME required.
From HOUKM, JEDYE: RNAV 1- GPS required.



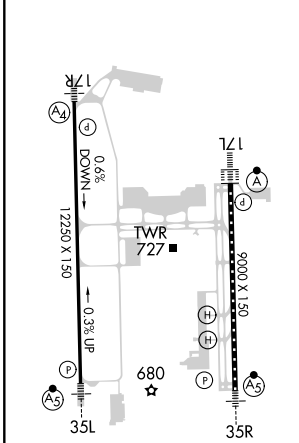
MISSED APPROACH: Climb to 1000, then climbing left turn to 3000 on heading 040° and CWK VORTAC R-088 to HOOKK/CWK 17 DME and hold.

Simultaneous approach authorized. Requires specific OPSPEC, MSPEC or LOA approval and use of HUD to DH.

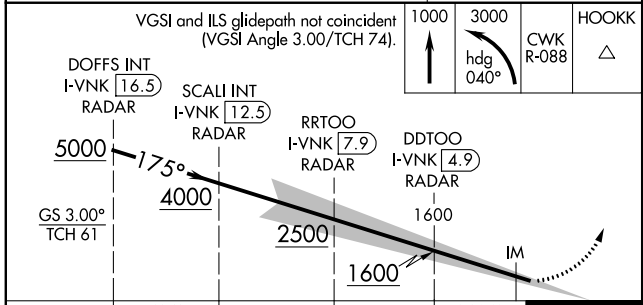
D-ATIS 124.4	AUSTIN APP CON 127.225 317.65 (EAST) 120.875 270.25 (SOUTH) 119.0 370.85 (WEST)	AUSTIN TOWER 121.0 281.5	GND CON 121.9 348.6	CLNC DEL 125.5 263.0	CPDLC
------------------------	---------------------------------------------------------------------------------------------------------------	------------------------------------	-------------------------------	--------------------------------	-------



ELEV 542	D TDZE 492
----------	-------------------



TDZ/CL Rwy 17L and 35R
HIRL Rwy 17L-35R and 17R-35L



CATEGORY	A	B	C	D
S-ILS 17L	RA 155/14 150 DA 642			

SA CATEGORY I - SPECIAL AIRCREW & AIRCRAFT CERTIFICATION REQUIRED

SC-3, 15 AUG 2019 to 12 SEP 2019

SC-3, 15 AUG 2019 to 12 SEP 2019