
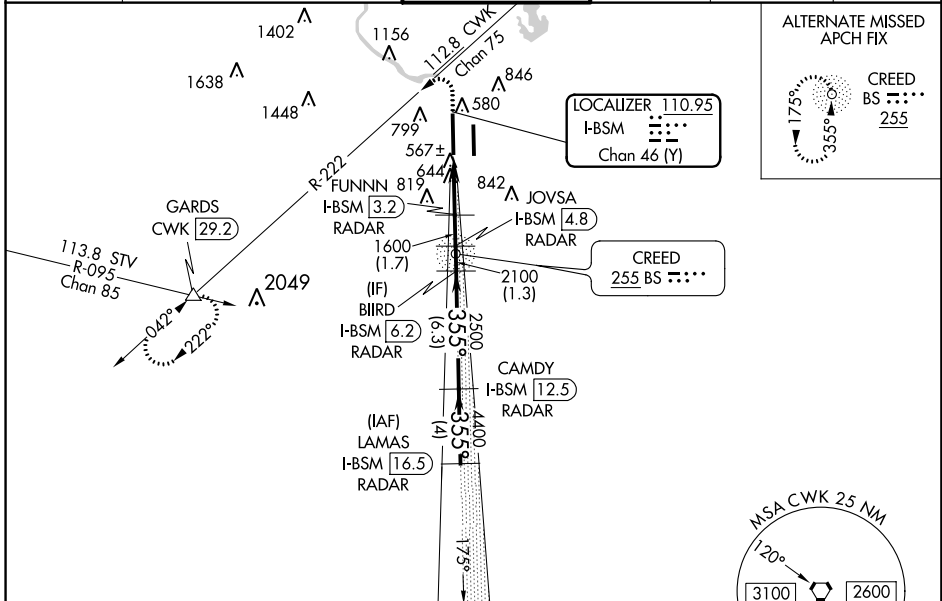


LOC/DME I-BSM 110.95 Chan 46 (Y)	APP CRS 355°	Rwy Idg TDZE 496 Apt Elev 542	12250
--	------------------------	---	--------------

ILS or LOC RWY 35L

AUSTIN-BERGSTROM INTL (AUS)

DME or RADAR required.		AUSTIN TOWER 121.0 281.5		GND CON 121.9 348.6	CLNC DEL 125.5 263.0	CPDLC
Simultaneous approach authorized. For inop ALS, increase S-ILS 35L Cat E visibility to RVR 4000, S-LOC 35L Cats C/D/E visibility to RVR 6000. Rwy 35L helicopter visibility reduction below 3/4 SM NA. **RVR 1800 authorized with use of FD or AP or HUD to DA.		AUSTIN APP CON 127.225 317.65 (EAST) 120.875 270.25 (SOUTH) 119.0 370.85 (WEST)		MALSR  MISSED APPROACH: Climb to 1000 then climbing left turn to 3500 on heading 250° and CWK VORTAC R-222 to GARDS INT/CWK 29.2 DME and hold.		



SC-3, 15 AUG 2019 to 12 SEP 2019

SC-3, 15 AUG 2019 to 12 SEP 2019

ELEV 542	D TDZE 496
HIRL Rwy 17L-35R and 17R-35L TDZ/CL Rwy 17L and 35R	
FAF to MAP 3.3 NM	
Knots	60 90 120 150 180
Min:Sec	3:18 2:12 1:39 1:19 1:06

1000	3500	CWK R-222	GARDS	VGSI and ILS glidepath not coincident (VGSI Angle 3.00/TCH 60).	LAMAS			
↑	hdg 250°		△		I-BSM [16.5] RADAR			
*LOC only.		I-BSM DME ANTENNA	FUNN [3.2] RADAR	BIIRD I-BSM [6.2] RADAR	CAMDY I-BSM [12.5] RADAR			
		I-BSM [0.2]	*I-BSM [0.9] RADAR	1600	2100 2500 4400 5000			
		-1.1 NM	-2.2	-1.7	-1.3 NM	-6.3 NM	-4 NM	
CATEGORY	A	B	C	D	E			
S-ILS 35L**	696/24 200 (200-1/2)							
S-LOC 35L	900/24	404 (400-1/2)	900/40	404 (400-3/4)				
C CIRCLING	1040-1 498 (500-1)	1100-1 558 (600-1)	1200-1 3/4 658 (700-1 3/4)	1200-2 658 (700-2)	1520-3 978 (1000-3)			