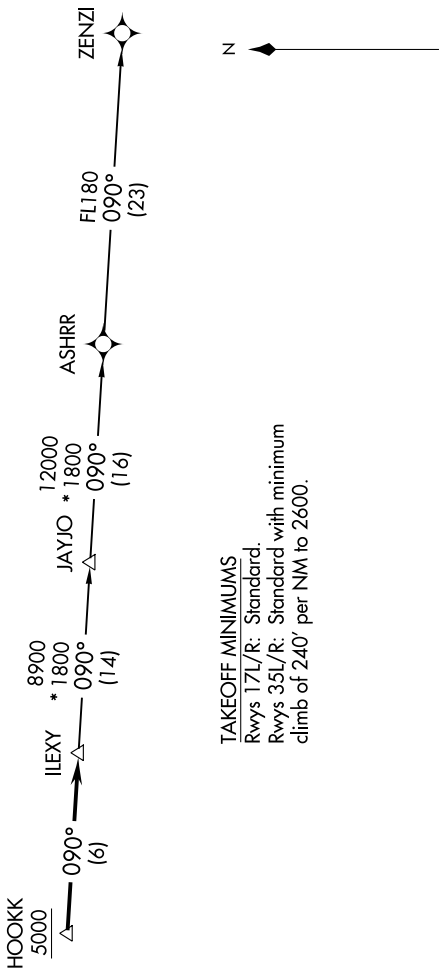


SC-3, 15 AUG 2019 to 12 SEP 2019

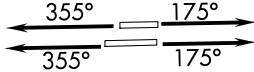
D-ATIS
124.4
CINC DEL
125.5 263.0
CPDIC
GND CON
121.9 348.6
AUSTIN TOWER
121.0 281.5
AUSTIN DEP CON
127.225 317.65

TOP ALTITUDE:
ASSIGNED BY ATC

NOTE: RADAR required.
NOTE: DME/DME/IRU or GPS required.
NOTE: RNAV-1.
NOTE: Houston terminal area arrivals expect routing from ILEXY.
NOTE: JAYJO transition to join V306 only.



TAKEOFF MINIMUMS
Rwys 17L/R: Standard.
Rwys 35L/R: Standard with minimum
climb of 240' per NM to 2600.



NOTE: Chart not to scale.

DEPARTURE ROUTE DESCRIPTION

TAKEOFF RWYS 17L/R: Climb heading 175° or as assigned by ATC for RADAR vectors to cross HOOKK at or above 5000, thence...
TAKEOFF RWYS 35L/R: Climb heading 355° or as assigned by ATC for RADAR vectors to cross HOOKK at or above 5000, thence...

... on track 90° to ILEXY, then on transition. Maintain altitude assigned by ATC.
Expect filed altitude 10 minutes after departure.

JAYJO TRANSITION (ILEXY2.JAYJO):
ZENZI TRANSITION (ILEXY2.ZENZI):

SC-3, 15 AUG 2019 to 12 SEP 2019