

# RNAV (RNP) Z RWY 17R

AUSTIN-BERGSTROM INTL (AUS)

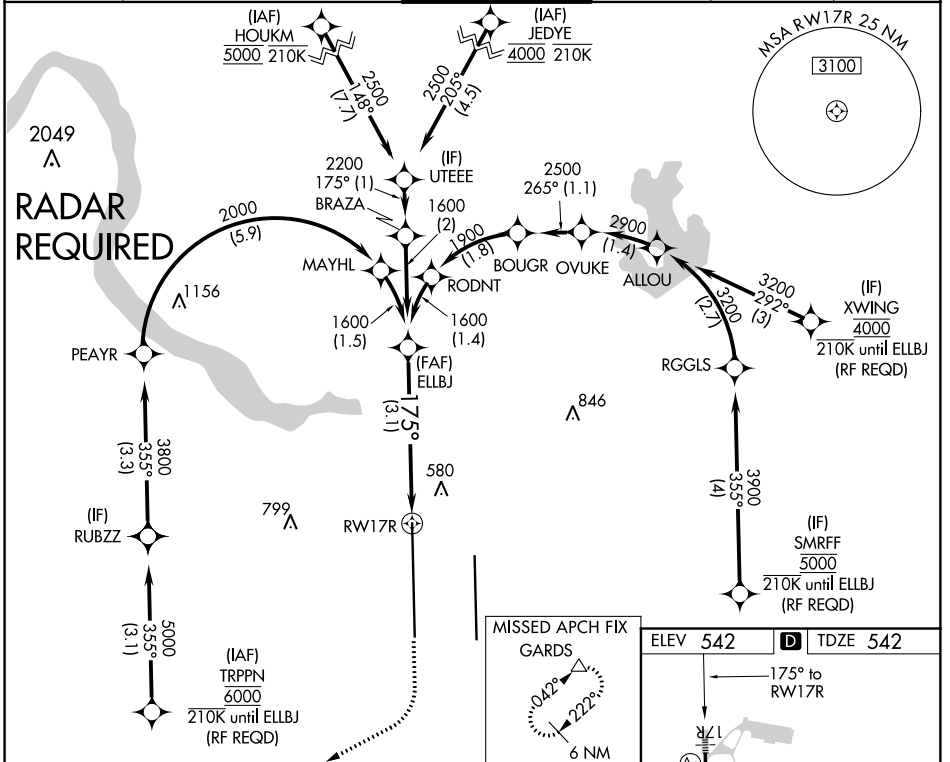
APP CRS	Rwy Idg	<b>12250</b>
<b>175°</b>	TDZE	<b>542</b>
	Apt Elev	<b>542</b>

For uncompensated Baro-VNAV systems, procedure NA below -6°C (22°F) or above 54°C (130°F). Simultaneous approach authorized. GPS required.

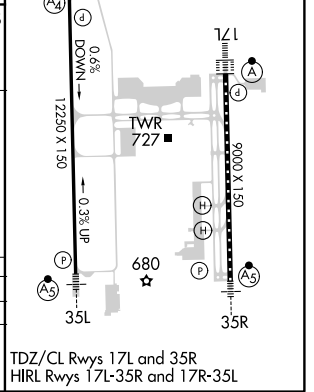
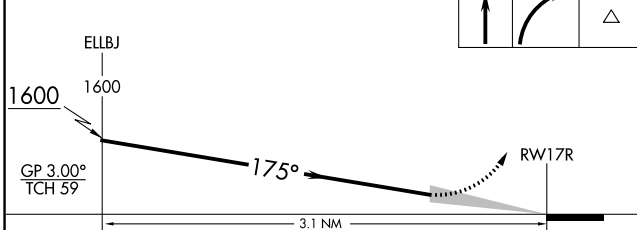
MALS

MISSED APPROACH: Climb to 1000 then climbing right turn to 3500 direct GARDS and hold.

D-ATIS	AUSTIN APP CON	AUSTIN TOWER	GND CON	CLNC DEL	CPDLC
<b>124.4</b>	<b>127.225 317.65</b> (EAST) <b>120.875 270.25</b> (SOUTH) <b>119.0 370.85</b> (WEST)	<b>121.0 281.5</b>	<b>121.9 348.6</b>	<b>125.5 263.0</b>	



See planview for multiple IF locations.



CATEGORY	A	B	C	D
RNP 0.30 DA		861/40	319 (400-¾)	

**AUTHORIZATION REQUIRED**

TDZ/CL Rwsy 17L and 35R  
HIRL Rwsy 17L-35R and 17R-35L

SC-3, 15 AUG 2019 to 12 SEP 2019

SC-3, 15 AUG 2019 to 12 SEP 2019