

WAAS CH 62829 W17A	APP CRS 175°	Rwy Idg TDZE 492 Apt Elev 542	9000
--	------------------------	---	-------------

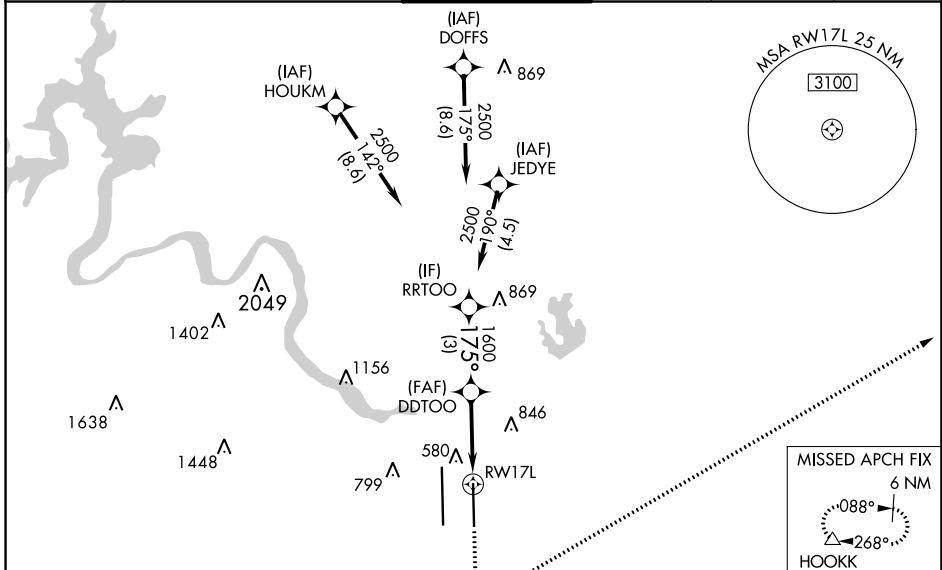
RNAV (GPS) Y RWY 17L

AUSTIN-BERGSTROM INTL (AUS)

For uncompensated Baro-VNAV systems, LNAV/VNAV NA below -6°C (22°F) or above 54°C (130°F). Simultaneous approach authorized. LNAV procedure NA during simultaneous operations. Use of FD or AP providing RNAV track guidance required during simultaneous operations. DME/DME RNP -0.3 NA. For inop ALS, increase LPV Cat E visibility to RVR 4000, increase LNAV/VNAV Cat E visibility to 1 3/8 SM and increase LNAV Cat E visibility to RVR 6000.

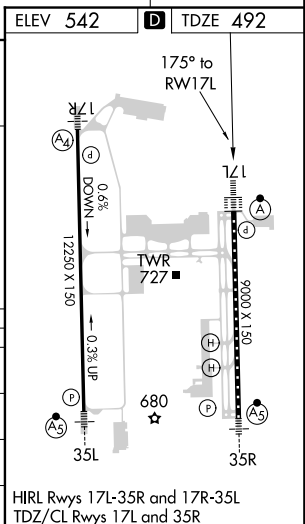
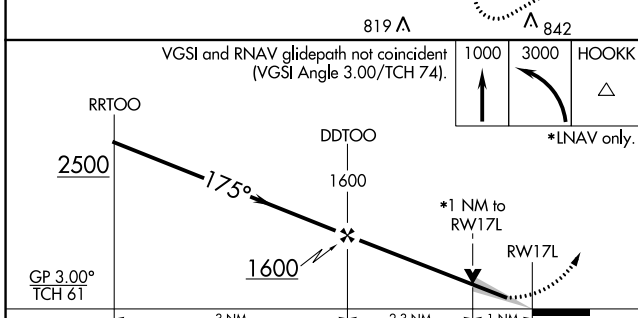
ALSF-2
MISSED APPROACH:
Climb to 1000 then climbing left turn to 3000 direct HOOKK and hold.

D-ATIS 124.4	AUSTIN APP CON 127.225 317.65 (EAST) 120.875 270.25 (SOUTH) 119.0 370.85 (WEST)	AUSTIN TOWER 121.0 281.5	GND CON 121.9 348.6	CLNC DEL 125.5 263.0	CPDLC
------------------------	---	------------------------------------	-------------------------------	--------------------------------	-------



SC-3, 15 AUG 2019 to 12 SEP 2019

SC-3, 15 AUG 2019 to 12 SEP 2019



CATEGORY	A	B	C	D	E
LPV DA	692/18		200 (200-1/2)		
LNAV/VNAV DA	906/45		414 (400-3/8)		
LNAV MDA	880/24	388 (400-1/2)	880/35		388 (400-3/8)
CIRCLING	1040-1 498 (500-1)	1100-1 558 (600-1)	1200-1 3/4 658 (700-1 3/4)	1200-2 658 (700-2)	1520-3 978 (1000-3)

HIRL Rwy 17L-35R and 17R-35L
TDZ/CL Rwy 17L and 35R