

WAAS CH 99429 W35B	APP CRS 355°	Rwy Idg TDZE 480 Apt Elev 542	9000
--	------------------------	---	-------------

RNAV (GPS) Y RWY 35R

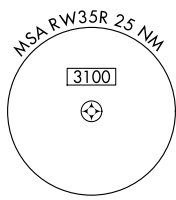
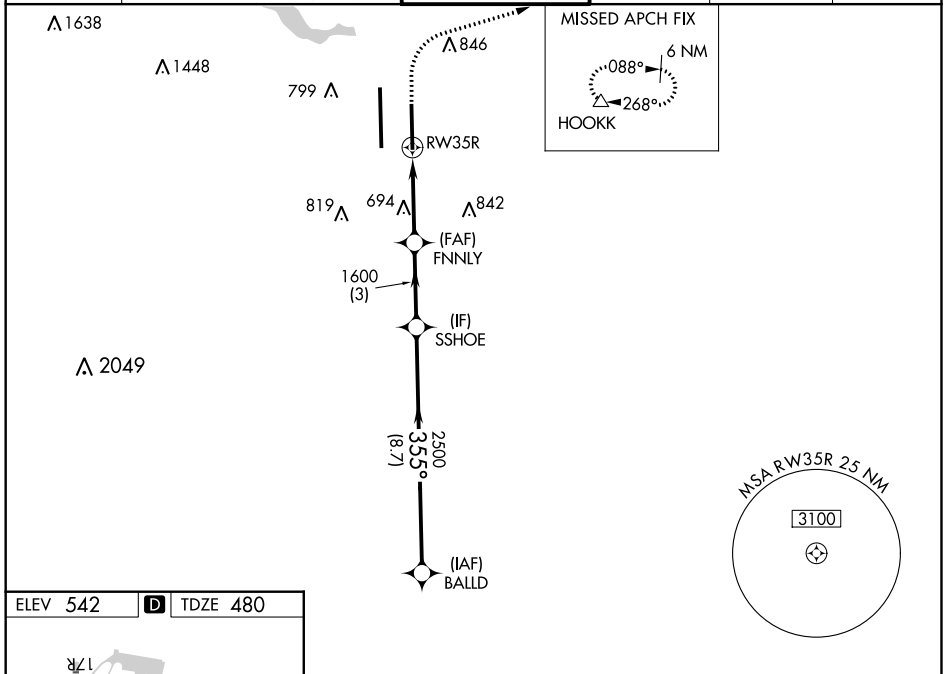
AUSTIN-BERGSTROM INTL (AUS)

⚠ For uncompensated Baro-VNAV systems, LNAV/VNAV NA below -6°C (22°F) or above 54°C (130°F). Simultaneous approach authorized. LNAV procedure NA during simultaneous operations. Use of FD or AP providing RNAV track guidance required during simultaneous operations. DME/DME RNP-0.3 NA. For Inop ALS increase LPV Cat E visibility to RVR 4000, LNAV/VNAV Cat E visibility to 1½ SM and LNAV Cats C/D/E visibility to 1½ SM.

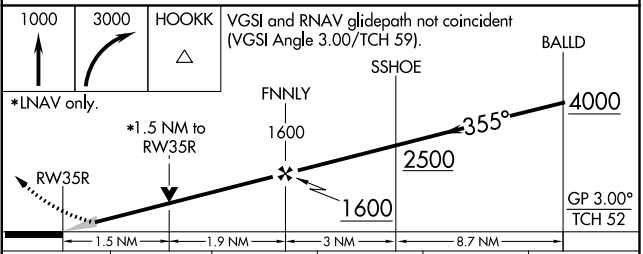
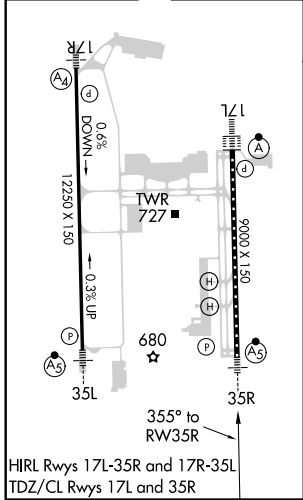
MALSR

MISSED APPROACH:
Climb to 1000 then climbing right turn to 3000 direct HOOKK and hold.

D-ATIS 124.4	AUSTIN APP CON 127.225 317.65 (EAST) 120.875 270.25 (SOUTH) 119.0 370.85 (WEST)	AUSTIN TOWER 121.0 281.5	GND CON 121.9 348.6	CLNC DEL 125.5 263.0	CPDLC
------------------------	---	------------------------------------	-------------------------------	--------------------------------	-------



ELEV 542	D	TDZE 480
-----------------	----------	-----------------



CATEGORY	A	B	C	D	E
LPV DA	680/18		200 (200-½)		
LNAV/VNAV DA	971-1¼		491 (500-1¼)		
LNAV MDA	1000/24	520 (500-½)	1000/55	520 (500-1)	
C CIRCLING	1040-1 498 (500-1)	1100-1 558 (600-1)	1200-1¾ 658 (700-¾)	1200-2 658 (700-2)	1520-3 978 (1000-3)

SC-3, 15 AUG 2019 to 12 SEP 2019

SC-3, 15 AUG 2019 to 12 SEP 2019