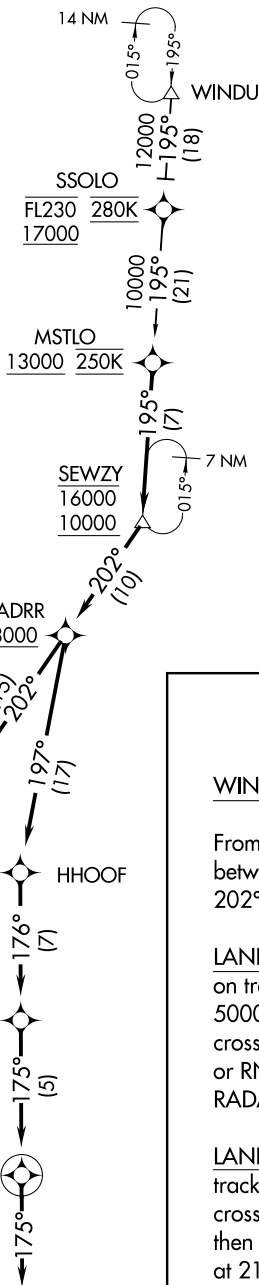


SEWZY FOUR ARRIVAL (RNAV)

AUSTIN APP CON
127.225 317.65
D-ATIS
124.4



NOTE: RADAR required.
 NOTE: RNAV 1.
 NOTE: DME/DME/IRU or GPS required.
 NOTE: Turbojet and turboprop aircraft only.
 NOTE: Expect Rwy assignment from AUSTIN TRACON upon initial contact.

ARRIVAL ROUTE DESCRIPTION

WINDU TRANSITION (WINDU.SEWZY4)

From MSTLO on track 195° to cross SEWZY between 10000 and 16000, then on track 202° to cross VADRR at or above 8000.

LANDING RUNWAYS 17L/R: From VADRR on track 202° to cross MGTEC at or above 5000 and at 220K, then on track 221° to cross JEDYE at 4000 and at 210K. Expect ILS or RNAV (RNP) RWY 17L/R approach or RADAR vectors to final approach course.

LANDING RUNWAYS 35L/R: From VADRR on track 197° to HHOOF, then on track 176° to cross MMARE at or above 6000 and at 220K, then on track 175° to cross SMRFF at 5000 and at 210K, then on track 175°. Expect RADAR vectors to final approach course.

NOTE: Chart not to scale.