

LOC I-BWG	APP CRS	Rwy Idg	6501
108.75	034°	TDZE	547
		Apt Elev	547

ILS or LOC RWY 3

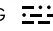
BOWLING GREEN-WARREN COUNTY RGNL (BWG)

⚠ Night landing: Rwy 30 NA. When local altimeter setting not received, use Glasgow altimeter setting and increase all DA/MDA 80 feet and increase S-ILS 3 all Cats visibility 1/8 mile, S-LOC 3 Cats C/D 3/8 mile, and Circling Cat C and D visibility 1/4 mile. Helicopter visibility reduction below 3/4 SM NA. S-LOC 3 ZELUL Fix minimums NA when using Glasgow altimeter setting.

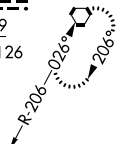
MISSED APPROACH: Climb to 2000 then climbing right turn to 2400 direct BW LOM and hold.

ASOS 127.825	MEMPHIS CENTER 133.85 317.6	UNICOM 123.0 CTAF 0
------------------------	---------------------------------------	--------------------------------------

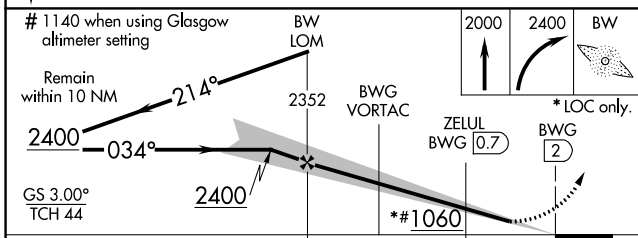
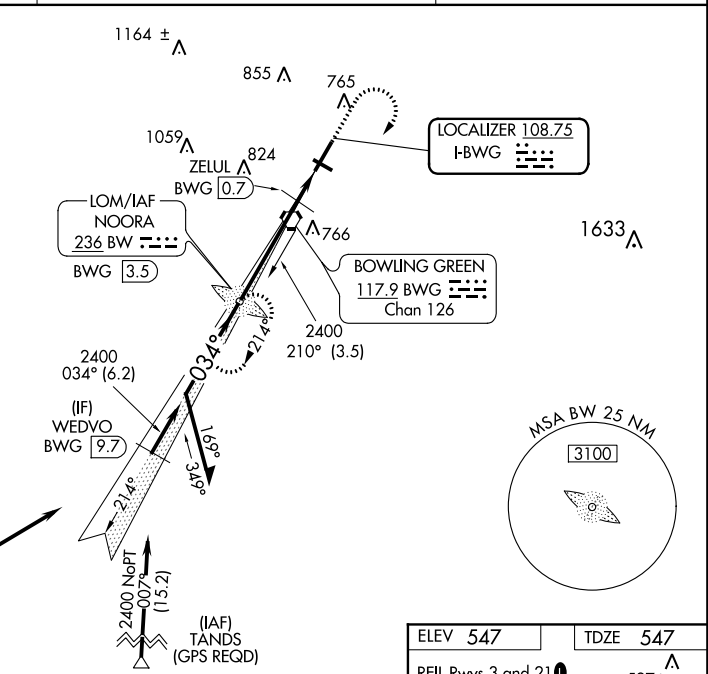
ALTERNATE MISSED APCH FIX BOWLING GREEN

BWG 

117.9
Chan 126



ADF REQUIRED



CATEGORY	A	B	C	D
S-ILS 3	747-3/4 200 (200-3/4)			
S-LOC 3	1060-1	513 (600-1)	1060-1 3/8	513 (600-1 3/8)
C CIRCLING	1060-1 513 (600-1)	1120-1 573 (600-1)	1160-1 3/4 613 (700-1 3/4)	1200-2 653 (700-2)
ZELUL FIX MINIMUMS (DME REQUIRED)				
S-LOC 3	880-1 333 (400-1)			
C CIRCLING	1000-1 453 (500-1)	1120-1 573 (600-1)	1160-1 3/4 613 (700-1 3/4)	1200-2 653 (700-2)

ELEV 547	TDZE 547
REIL Rwy 3 and 21 0	597 ± A
MIRL Rwy 12-30	
HIRL Rwy 3-21 0	

Knots	60	90	120	150	180
Min:Sec	5:24	3:36	2:42	2:10	1:48

SE-1, 15 AUG 2019 to 12 SEP 2019

SE-1, 15 AUG 2019 to 12 SEP 2019