

# NDB RWY 3

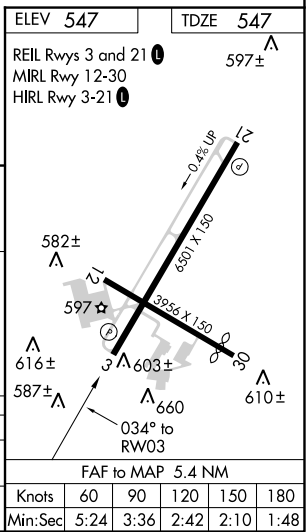
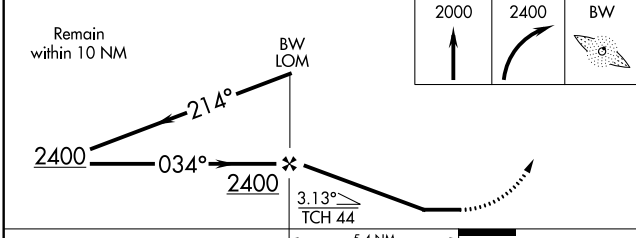
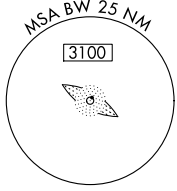
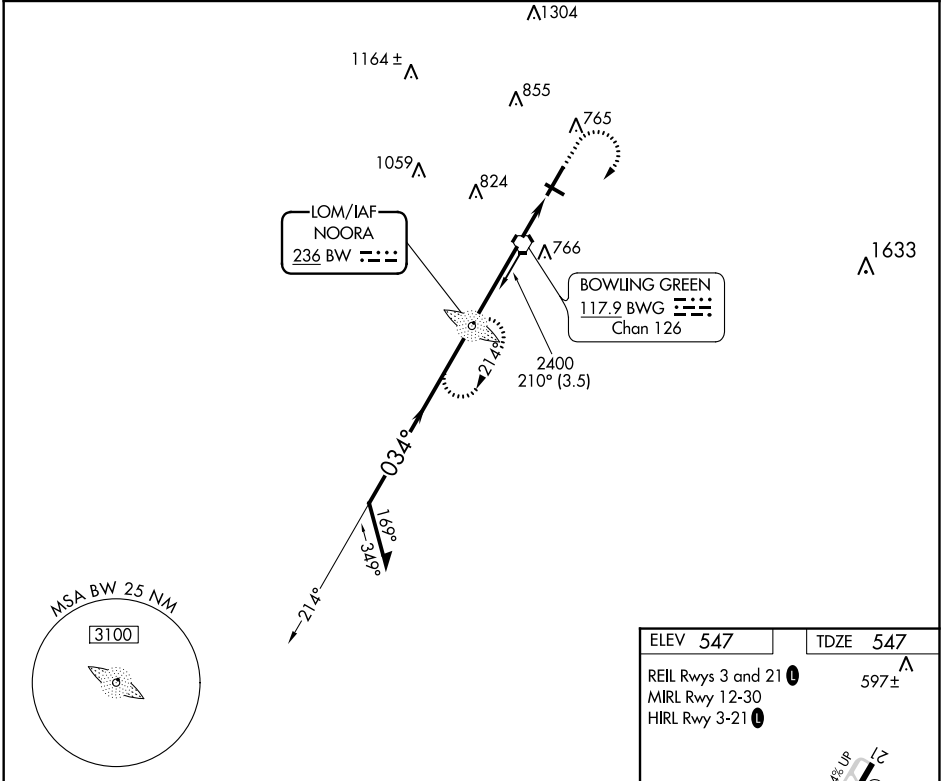
BOWLING GREEN-WARREN COUNTY RGNL (BWG)

LOM BW	APP CRS	Rwy Idg	<b>6501</b>
<b>236</b>	<b>034°</b>	TDZE	<b>547</b>
		Apt Elev	<b>547</b>

**⚠** Night landing: Rwy 30 NA. When local altimeter setting not received, use Glasgow Muni altimeter setting and increase all MDA 80 feet and increase S-3 and Circling Cat C and D visibility ¼ mile. Helicopter visibility reduction below ¾ SM NA.

**MISSED APPROACH:** Climb to 2000 then climbing right turn to 2400 direct BW LOM and hold.

ASOS <b>127.825</b>	MEMPHIS CENTER <b>133.85 317.6</b>	UNICOM <b>123.0 (CTAF) ①</b>
------------------------	---------------------------------------	---------------------------------



CATEGORY	A	B	C	D
S-3	1120-1	573 (600-1)	1120-1 5/8	573 (600-1 5/8)
<b>C</b> CIRCLING	1120-1	573 (600-1)	1160-1 3/4	1200-2
			613 (700-1 3/4)	653 (700-2)

FAF to MAP 5.4 NM					
Knots	60	90	120	150	180
Min:Sec	5:24	3:36	2:42	2:10	1:48

SE-1, 15 AUG 2019 to 12 SEP 2019

SE-1, 15 AUG 2019 to 12 SEP 2019