

VORTAC BWG 117.9 Chan 126	APP CRS 024°	Rwy Idg TDZE Apt Elev	N/A N/A 547
---	------------------------	-----------------------------	--

VOR-A

BOWLING GREEN-WARREN COUNTY RGNL (BWG)

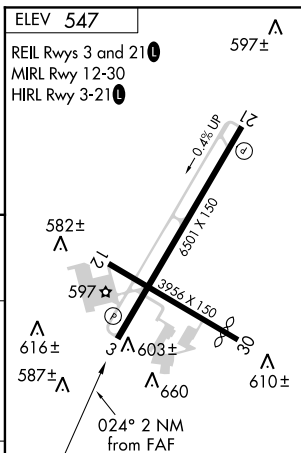
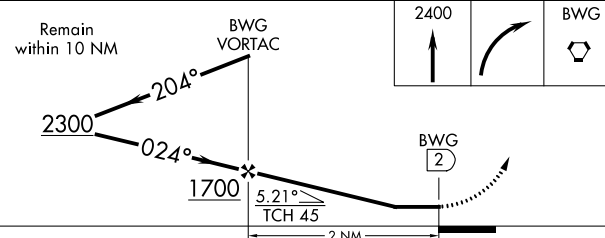
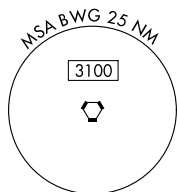
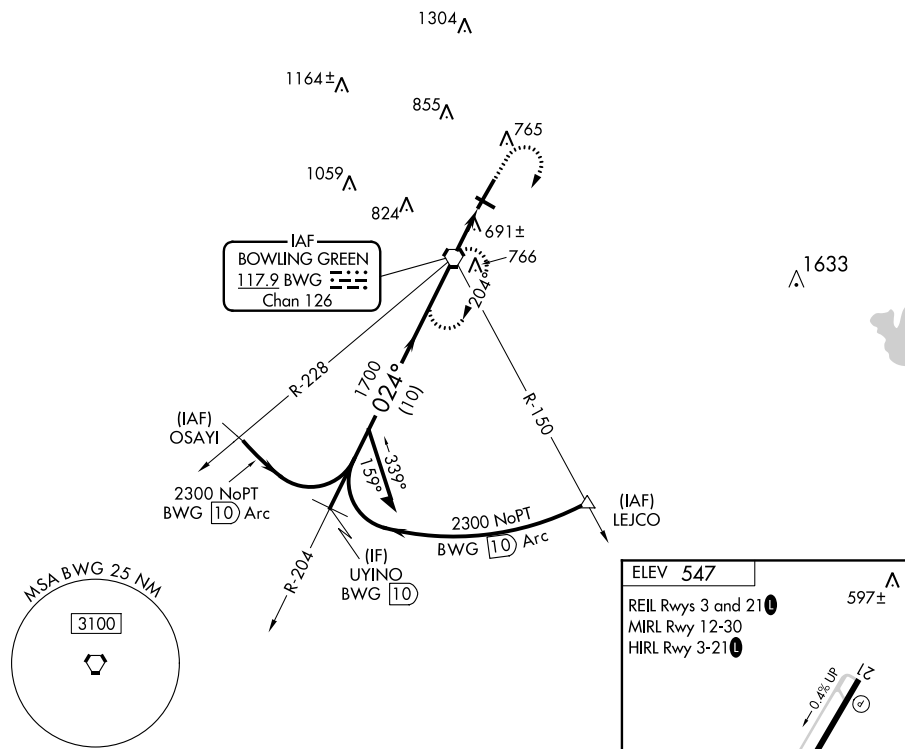
⚠ When local altimeter setting not received use Glasgow altimeter setting and increase all MDA 80 feet and Circling Cat C visibility ¼ mile.
⚠ Helicopter visibility reduction below 1 SM NA. Night landing: Rwy 30 NA.

MISSED APPROACH: Climb to 2400 then right turn direct BWG VORTAC and hold.

ASOS
127.825

MEMPHIS CENTER
133.85 317.6

UNICOM
123.0 (CTAF) 0



CATEGORY	FAF to MAP 2 NM					
	A	B	C	D		
CIRCLING	1000-1	1120-1	1120-1½	1120-2		
	453 (500-1)	573 (600-1)	573 (600-1½)	573 (600-2)		
	Knots	60	90	120	150	180
	Min:Sec	2:00	1:20	1:00	0:48	0:40

VOR-A

SE-1, 15 AUG 2019 to 12 SEP 2019

SE-1, 15 AUG 2019 to 12 SEP 2019