

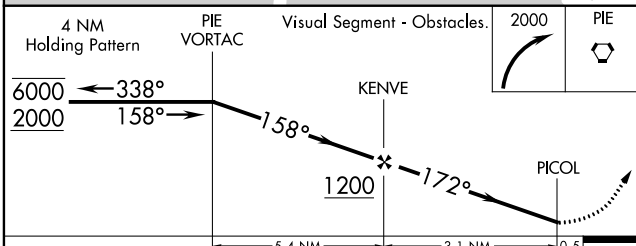
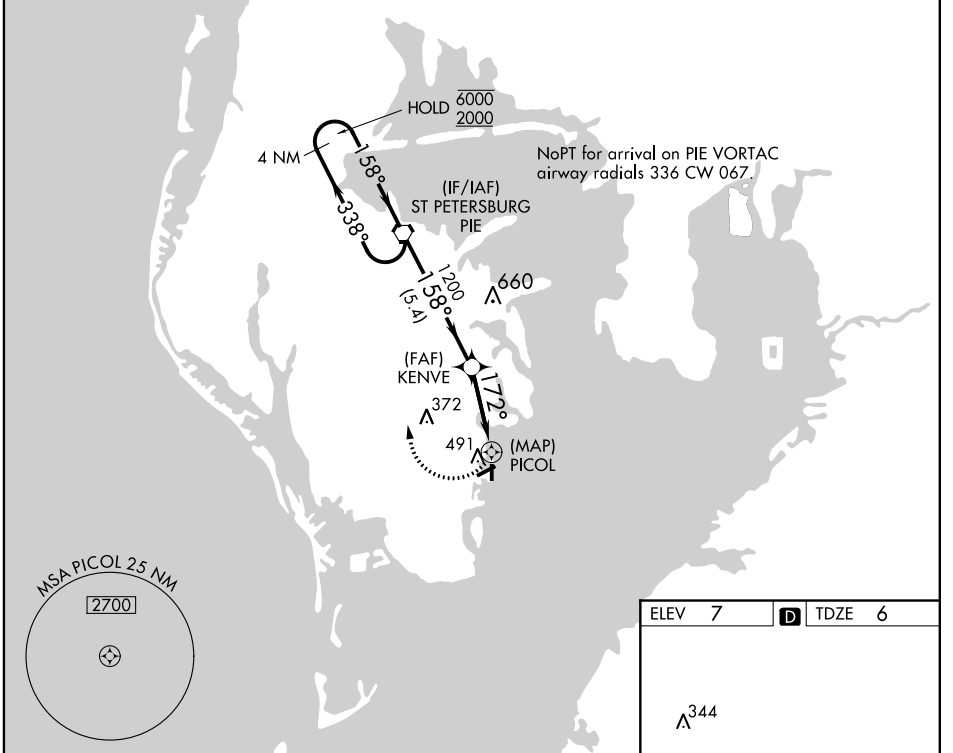
APP CRS 172°	Rwy Idg	2864
	Rwy Idg (night only)	2824
	TDZE	6
	Apt Elev	7

RNAV (GPS) RWY 18

ALBERT WHITTED (SPG)

RNP APCH.		MISSED APPROACH: Climbing right turn to 2000 direct PIE VORTAC and hold.	
	Circling Rwy 36 NA at night. Rwy 18 helicopter visibility reduction below 3/4 SM NA.		

ASOS 118.875	TAMPA APP CON 119.65 316.05 (EAST) 125.3 316.05 (WEST)	ALBERT WHITTED TOWER ★ 127.4 (CTAF) 257.6	GND CON 121.8	UNICOM 122.95
------------------------	--	---	-------------------------	-------------------------



ELEV 7	TDZE 6
--------	--------

MIRL Rwy 7-25 and 18-36
REIL Rwy 7, 18, 25 and 36

CATEGORY	A	B	C	D
LNVA MDA	800-1 794 (800-1)	800-1¼ 794 (800-1¼)	NA	
CIRCLING	860-1¼	853 (900-1¼)	NA	

SE-3, 15 AUG 2019 to 12 SEP 2019

SE-3, 15 AUG 2019 to 12 SEP 2019