

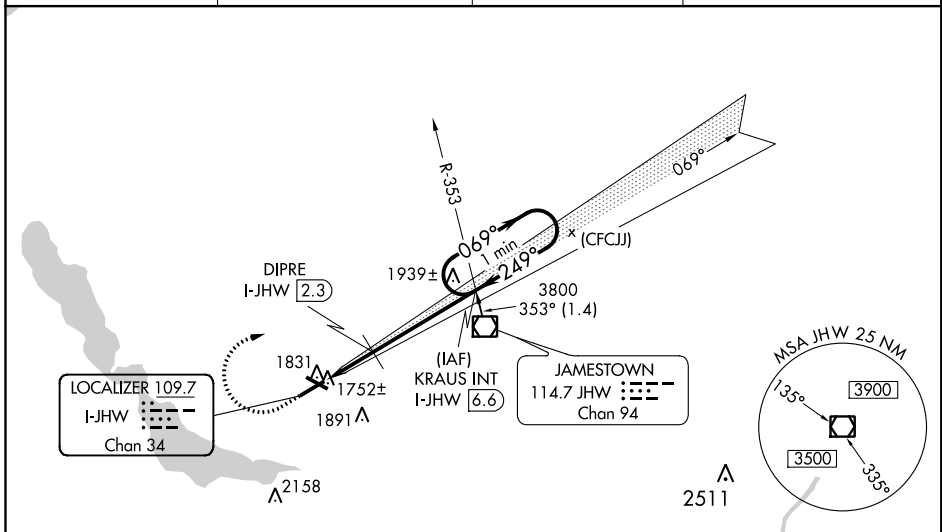
LOC/DME I-JHW 109.7 Chan 34	APP CRS 249°	Rwy Idg TDZE 1721 Apt Elev 1723
---	------------------------	---

ILS or LOC RWY 25
CHAUTAUQUA COUNTY/JAMESTOWN (JHW)

⚠ Circling to Rwy 13/31 NA at night. Autopilot coupled approach NA below 2420. VDP NA with Dunkirk altimeter setting. Cat D SI NA when using Dunkirk altimeter. When local altimeter setting not received, use Dunkirk altimeter setting and increase S-ILS 25 DA to 2161 and all MDA 200 feet; increase S-ILS 25 all Cats visibility 3/4 mile; increase S-LOC 25 Cats A and B visibility to 3/4, Circling Cats A and B 1 1/4, increase S-LOC 25 Cats C and D visibility to 2, Circling Cats C visibility 2 3/4 and D visibility 3, DIPRE fix minimums increase S-LOC 25 Cats C and D visibility 1 1/8, and Circling Cats C visibility 2 and Cat D visibility 2 3/4 mile. For inoperative MALSIR when using Dunkirk altimeter setting, increase S-ILS 25 all Cats visibility 1 1/8 mile. VDP NA when using Dunkirk altimeter setting.

MALSIR
AS
MISSED APPROACH: Climb to 2420 then climbing right turn to 3800 on heading 125° and I-JHW course NE to KRAUS INT/I-JHW 6.6 DME and hold.

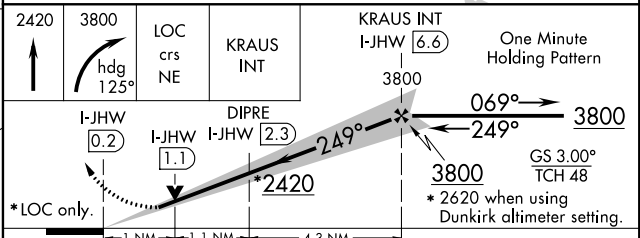
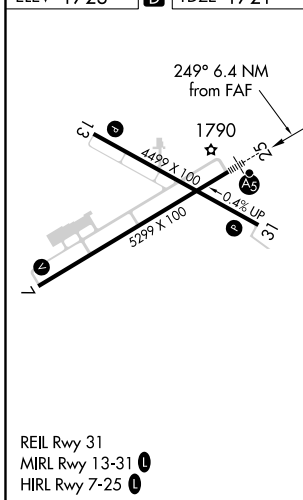
AWOS-3PT 118.425	BUFFALO APP CON* 126.05	CLNC DEL 126.05	UNICOM 122.7 (CTAF) 📻
----------------------------	-----------------------------------	---------------------------	--



NE-2: 15 AUG 2019 to 12 SEP 2019

NE-2: 15 AUG 2019 to 12 SEP 2019

ELEV 1723	D	TDZE 1721
-----------	----------	-----------



CATEGORY	A	B	C	D
S-ILS 25	1971-1/2		250 (300-1/2)	
S-LOC 25	2420-1/2	699 (700-1/2)	2420-1 1/2	699 (700-1 1/2)
C CIRCLING	2420-1	697 (700-1)	2420-2 697 (700-2)	2420-2 1/4 697 (700-2 1/4)
DIPRE FIX MINIMUMS (DME REQUIRED)				
S-LOC 25	2080-1/2	359 (400-1/2)	2080-5/8	359 (400-5/8)
C CIRCLING	2200-1	477 (500-1)	2200-1 1/2 477 (500-1 1/2)	2340-2 617 (700-2)