

WAAS CH 62910 W25A	APP CRS 249°	Rwy Idg TDZE Apt Elev	5299 1721 1723
--	------------------------	-----------------------------	---

RNAV (GPS) RWY 25

CHAUTAUQUA COUNTY/JAMESTOWN (JHW)

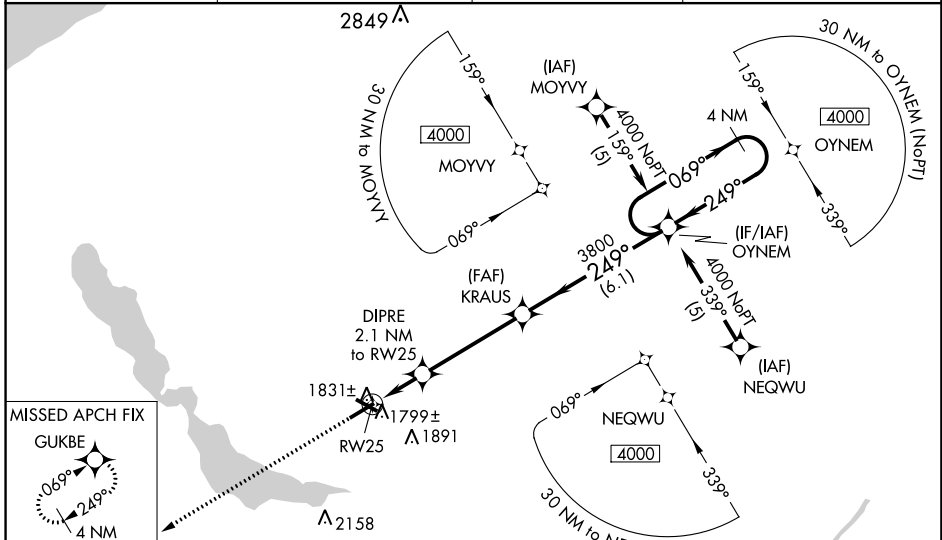
⚠ For uncompensated Baro-VNAV systems, LNAV/VNAV NA below -18°C (0°F) or above 54°C (130°F). DME/DME RNP-0.3 NA. When local altimeter setting not received, use Dunkirk altimeter setting and increase LPV DA to 2113, LNAV/VNAV DA to 2246, and all MDA 200 feet; increase LPV all Cats, LNAV/VNAV all Cats, LNAV Cat C, and Circling Cats C and D visibility ½ mile; increase LNAV Cat D visibility ¼ mile. For inoperative MALS, increase LNAV Cat D visibility to 1 ¼ mile. For inoperative MALS when using Dunkirk altimeter setting, increase LPV all Cats visibility to 1 ½ mile. Baro-VNAV and VDP NA when using Dunkirk altimeter setting. Circling to Rwy 13/31 NA at night.

MALS

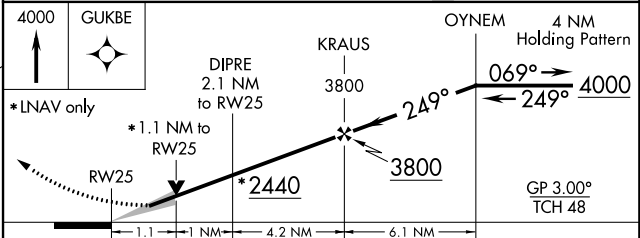
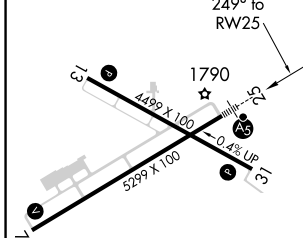


MISSED APPROACH:
Climb to 4000 direct GUKBE and hold.

AWOS-3PT 118.425	BUFFALO APP CON * 126.05	CLNC DEL 126.05	UNICOM 122.7 (CTAF) 0
----------------------------	------------------------------------	---------------------------	---------------------------------



ELEV 1723	D	TDZE 1721
-----------	----------	-----------



CATEGORY	A	B	C	D
LPV DA		1921-½	200 (200-½)	
LNAV/VNAV DA		2054-¾	333 (400-¾)	
LNAV MDA	2100-½	379 (400-½)		2100-1 379 (400-1)
CIRCLING	2200-1	477 (500-1)	2240-1½ 517 (600-1½)	2280-2 557 (600-2)

REIL Rwy 31
MIRL Rwy 13-31 0
HIRL Rwy 7-25 0

NE-2, 15 AUG 2019 to 12 SEP 2019

NE-2, 15 AUG 2019 to 12 SEP 2019