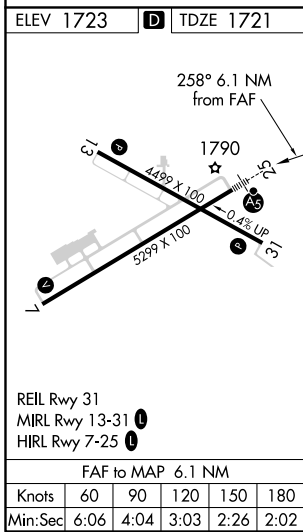
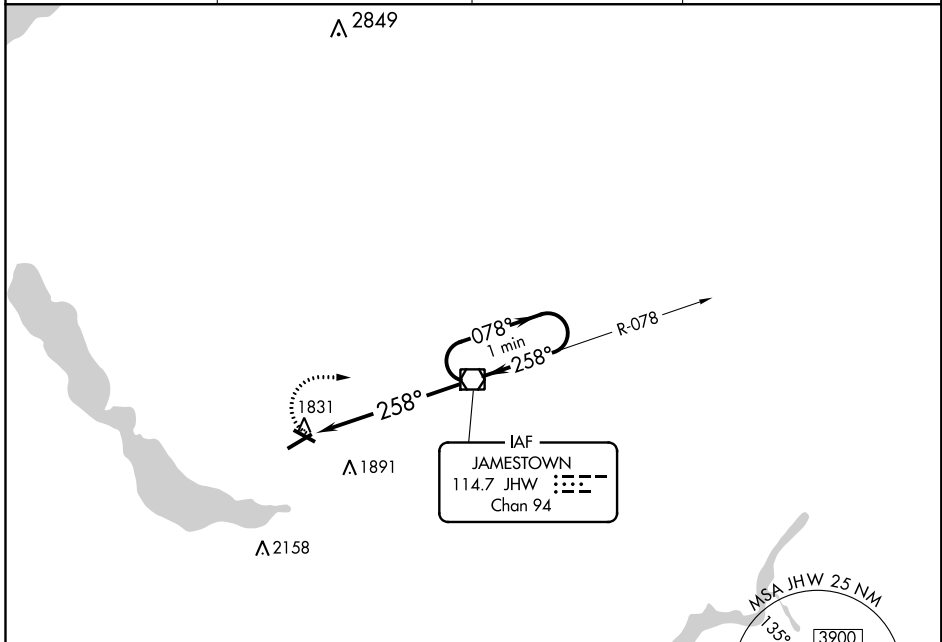


VOR/DME JHW 114.7 Chan 94	APP CRS 258°	Rwy Idg TDZE 1721 Apt Elev 1723	5299
---	------------------------	---	-------------

VOR RWY 25

CHAUTAUQUA COUNTY/JAMESTOWN (JHW)

<p>▼ Inoperative table does not apply. Circling to Rwy 13/31 NA at night.</p>		<p>MALSR</p>	<p>MISSED APPROACH: Climbing right turn to 3700 direct JHW VOR/DME and hold.</p>
AWOS-3PT 118.425	BUFFALO APP CON ★ 126.05	CLNC DEL 126.05	UNICOM 122.7 (CTAF) 0



3700	JHW	JHW VOR/DME	One Minute Holding Pattern
------	-----	-------------	----------------------------

Diagram showing the holding pattern for RWY 25. The holding pattern is at 3700 feet. The holding pattern is at 078°/258°. The holding pattern is at 078°/258°. The holding pattern is at 078°/258°. The holding pattern is at 078°/258°.

CATEGORY	A	B	C	D
S-25	2180-1	459 (500-1)	2180-1½ 459 (500-1½)	2180-1½ 459 (500-1½)
CIRCLING	2200-1	477 (500-1)	2240-1½ 517 (600-1½)	2280-2 557 (600-2)

NE-2, 15 AUG 2019 to 12 SEP 2019

NE-2, 15 AUG 2019 to 12 SEP 2019