


WAAS CH 90215 W03A	APP CRS 038°	Rwy Idg TDZE Apt Elev	7020 3652 3661
---------------------------------	------------------------	-----------------------------	---

RNAV (GPS) RWY 3

LEA COUNTY RGNL (HOB)

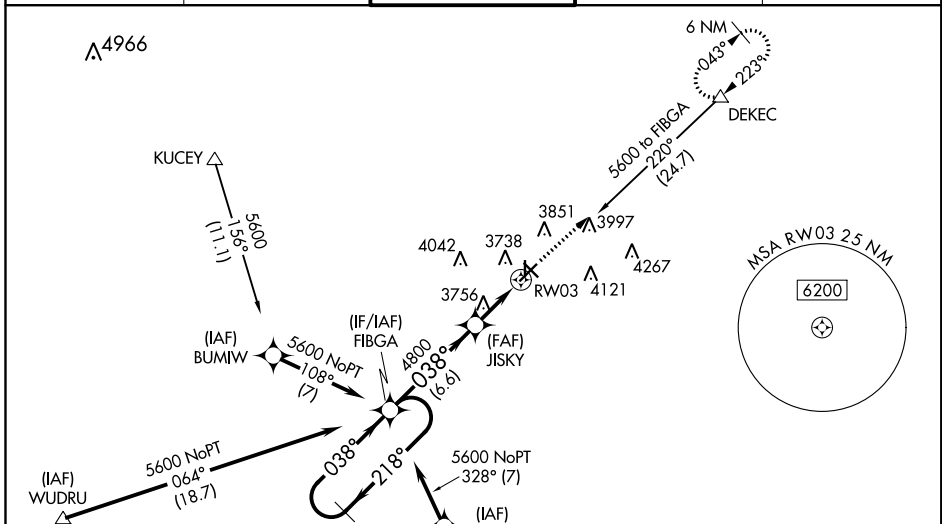
⚠ For uncompensated Baro-VNAV systems, LNAV/VNAV NA below -22°C (-7°F) or above 52°C (126°F). DME/DME-RNP-0.3 NA. When local altimeter setting not received, use Carlsbad altimeter setting and increase all DA 281 feet and all MDA 300 feet, increase LPV and LNAV/VNAV all Cats visibility ½ mile, LNAV Cats C/D visibility ¾ mile, Circling Cat C visibility ¾ mile, and Circling Cat D visibility ½ mile. Baro-VNAV and VDP NA when using Carlsbad altimeter setting. Inoperative table does not apply to LPV and LNAV/VNAV. For inoperative MALS increase LNAV Cats C/D visibility to 1 mile. For inoperative MALS when using Carlsbad altimeter setting, increase LPV and LNAV/VNAV all Cats visibility to 1¾ miles, and LNAV Cats C/D to 1½ miles. Rwy 17 helicopter visibility reduction below 1 SM NA. Circling Rwy 17 NA at night.

MALS R

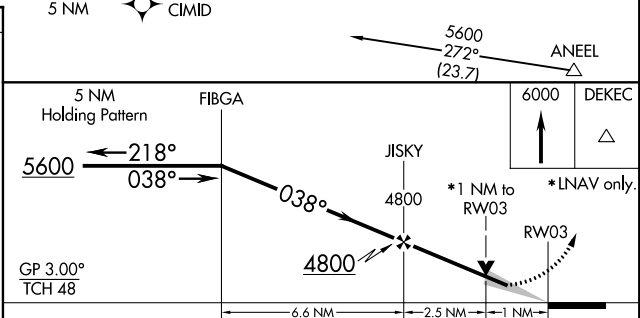
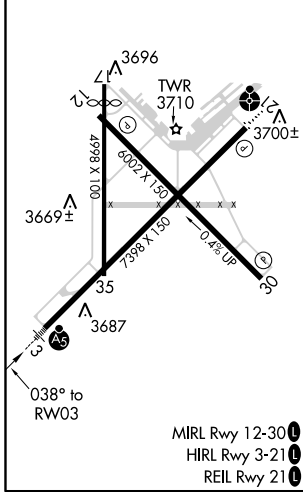


MISSED APPROACH:
Climb to 6000 direct DEKEC and hold.

ATIS 119.75	FORT WORTH CENTER 133.1 298.95	HOBBS TOWER * 120.65 (CTAF) 317.4	GND CON 121.9	UNICOM 122.95
-----------------------	--	---	-------------------------	-------------------------



ELEV 3661	D	TDZE 3652
-----------	----------	-----------



CATEGORY	A	B	C	D
LPV DA		3902-¾	250 (300-¾)	
LNAV/VNAV DA		3902-¾	250 (300-¾)	
LNAV MDA	4020-½	368 (400-½)	4020-⅝	368 (400-⅝)
C CIRCLING	4120-1 459 (500-1)	4160-1 499 (500-1)	4440-2¼ 779 (800-2¼)	4440-2½ 779 (800-2½)

SW-1, 15 AUG 2019 to 12 SEP 2019

SW-1, 15 AUG 2019 to 12 SEP 2019