

WAAS CH 69635 W30A	APP CRS 308°	Rwy Idg TDZE Apt Elev	6002 3649 3661
--	------------------------	-----------------------------	---

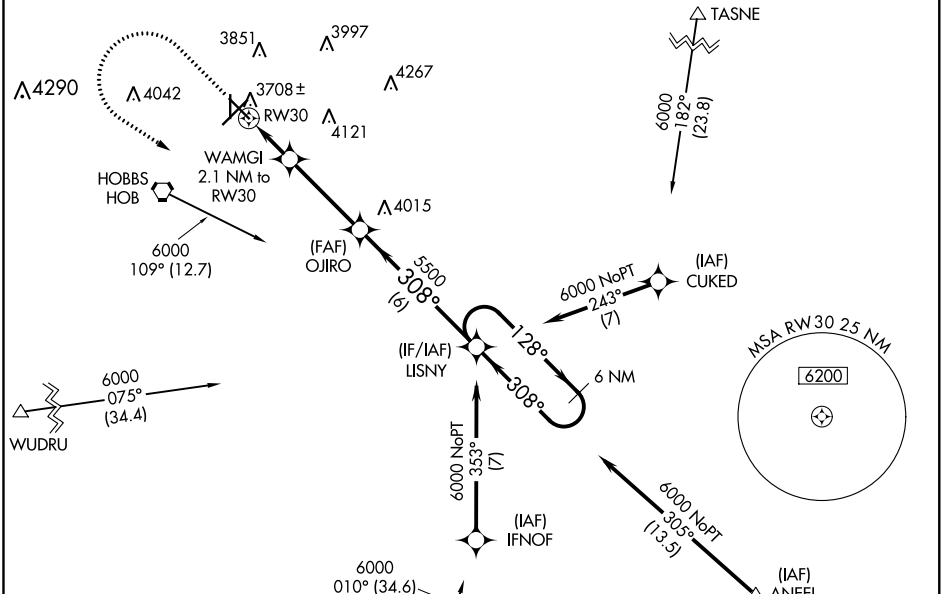
RNAV (GPS) RWY 30

LEA COUNTY RGNL (HOB)

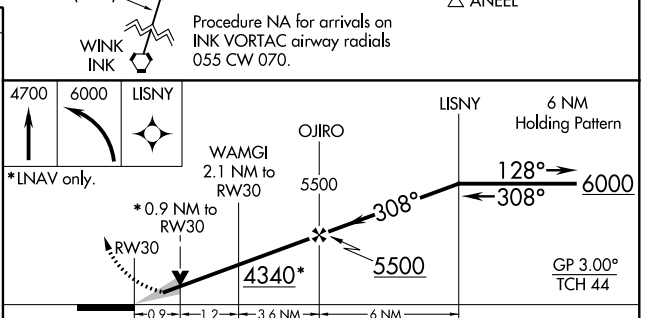
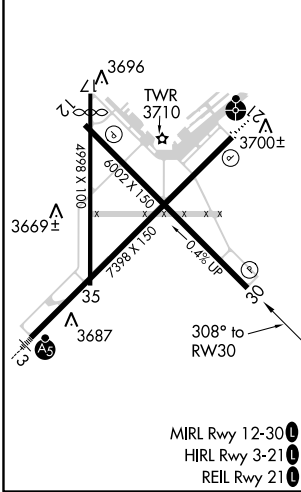
⚠ For uncompensated Baro-VNAV systems, LNAV/VNAV NA below -22°C (-7°F) or above 53°C (128°F).
⚠ DME/DME RNP-0.3 NA. When local altimeter setting not received, use Carlsbad altimeter setting and increase all DA 281 feet and all MDA 300 feet, increase LPV and LNAV/VNAV all Cats visibility 1 1/8 mile, LNAV Cats C/D and Circling Cat C visibility 3/4 mile, and Circling Cat D visibility 1/2 mile. Baro-VNAV and VDP NA when using Carlsbad altimeter setting. Rwy 17 helicopter visibility reduction below 1 SM NA. Circling Rwy 17 NA at night.

MISSED APPROACH: Climb to 4700 then climbing left turn to 6000 direct LISNY and hold.

ATIS 119.75	FORT WORTH CENTER 133.1 298.95	HOBBS TOWER * 120.65 (CTAF) 0 317.4	GND CON 121.9	UNICOM 122.95
-----------------------	--	---	-------------------------	-------------------------



ELEV 3661	D	TDZE 3649
-----------	----------	-----------



CATEGORY	A	B	C	D
LPV DA		3899-3/4	250 (300-3/4)	
LNAV/VNAV DA		3899-3/4	250 (300-3/4)	
LNAV MDA		3960-1	311 (300-1)	
CIRCLING	4120-1 459 (500-1)	4160-1 499 (500-1)	4440-2 1/4 779 (800-2 1/4)	4440-2 1/2 779 (800-2 1/2)

SW-1, 15 AUG 2019 to 12 SEP 2019

SW-1, 15 AUG 2019 to 12 SEP 2019