

WAAS CH <b>56531</b> <b>W25A</b>	APP CRS <b>249°</b>	Rwy Idg TDZE Apt Elev	<b>5506</b> <b>790</b> <b>812</b>
--	------------------------	-----------------------------	---

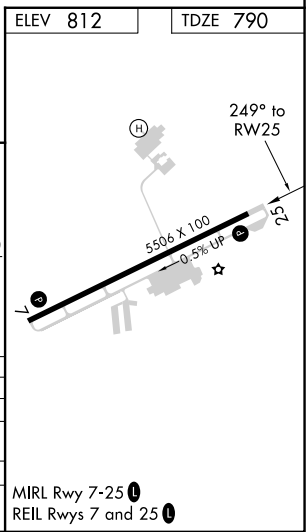
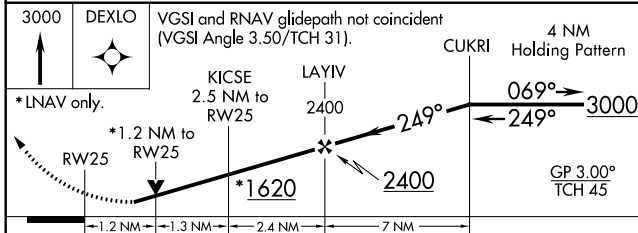
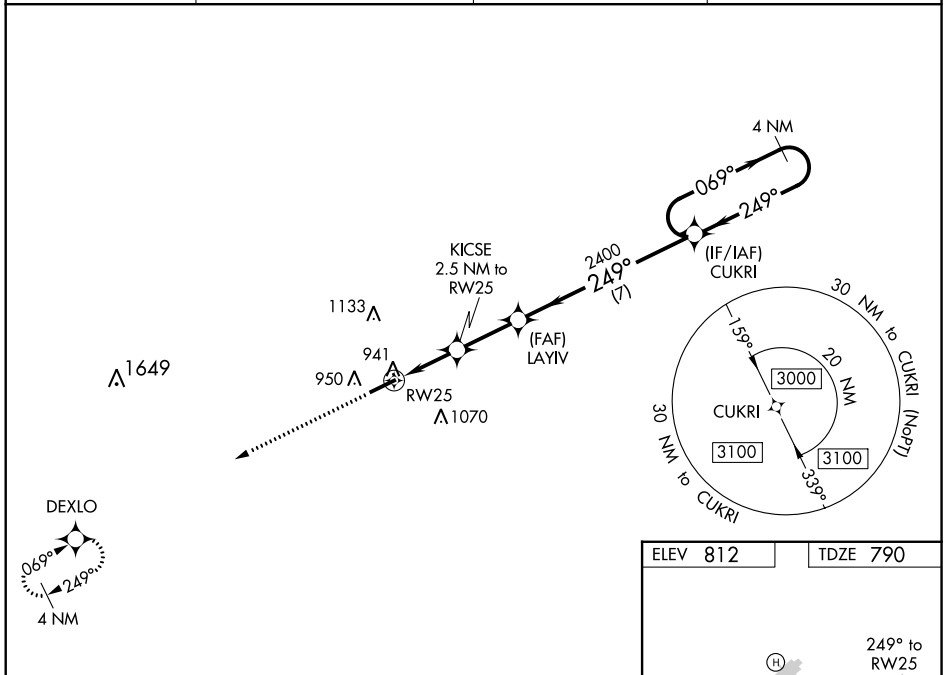
# RNAV (GPS) RWY 25

CAPITAL CITY (F'T)

**⚠** For uncompensated Baro-VNAV systems, LNAV/VNAV NA below -16°C (4°F) or above 54°C (130°F). DME/DME RNP-0.3 NA. When local altimeter setting not received, use Lexington altimeter setting and increase all LPV DA to 1160 feet and LNAV/VNAV DA to 1171 feet and all LPV visibilities ¼ mile, all LNAV/VNAV visibilities ⅓ mile; increase all MDAs 80 feet and visibility Cats C and D ¼ mile. VDP and Baro-VNAV NA with Lexington altimeter setting. Helicopter visibility reduction below ¾ SM NA.

**MISSED APPROACH:**  
Climb to 3000 direct DEXLO and hold.

ASOS <b>119.275</b>	LEXINGTON APP CON <b>120.75 298.9</b>	CINC DEL <b>118.65</b>	UNICOM <b>122.8 (CTAF) 0</b>
------------------------	--	---------------------------	---------------------------------



ELEV 812	TDZE 790
3000	DEXLO
*LNAV only.	
*1.2 NM to RW25	
*1620	
2400	
4 NM Holding Pattern	
GP 3.00° TCH 45	
CATEGORY	A B C D
LPV DA	1098-1 308 (300-1)
LNAV/VNAV DA	1109-1 ⅓ 319 (300-1 ⅓)
LNAV MDA	1200-1 410 (400-1) 1200-1 ⅓ 410 (400-1 ⅓)
CIRCLING	1280-1 1380-1 1440-1 ¾ 1440-2 468 (500-1) 568 (600-1) 628 (700-1 ¾) 628 (700-2)

SE-1, 15 AUG 2019 to 12 SEP 2019

SE-1, 15 AUG 2019 to 12 SEP 2019