

|                         |                        |                             |   |
|-------------------------|------------------------|-----------------------------|---|
| VOR FFT<br><b>109.4</b> | APP CRS<br><b>251°</b> | Rwy Idg<br>TDZE<br>Apt Elev | <b>5506</b><br><b>790</b><br><b>812</b> |
|-------------------------|------------------------|-----------------------------|---|

**VOR RWY 25**  
CAPITAL CITY (F'F'T)

**▽** Rwy 25 helicopter visibility reduction below 3/4 SM NA. When local altimeter setting not received, use Lexington altimeter setting and increase all MDA 80 feet, increase S-25 Cat C/D visibility 1/2 mile, and increase Circling Cat C 1/2 mile, and Cat D 1/4 mile.

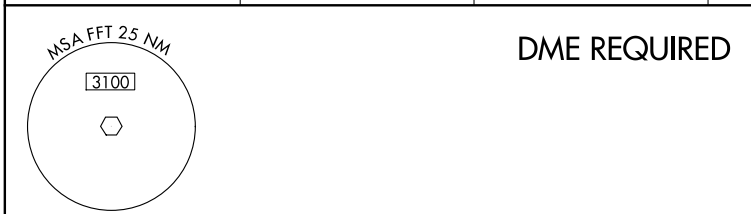
**MISSED APPROACH:**  
Climb to 3100 then left turn direct HYK VOR/DME and hold.

ASOS  
**119.275**

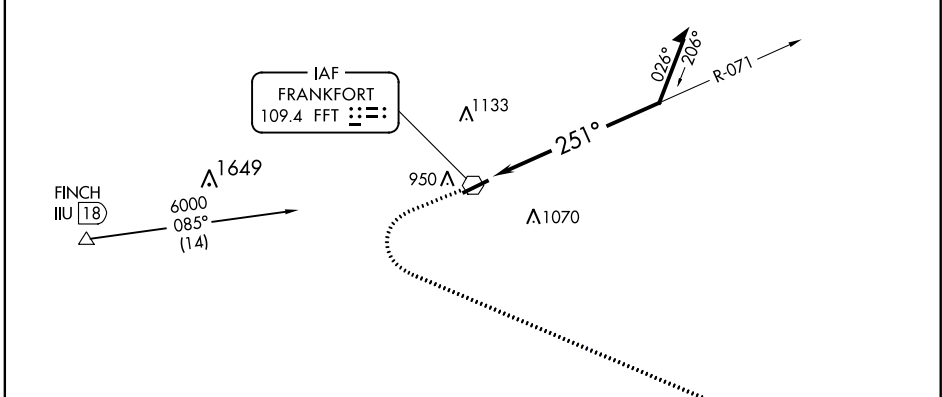
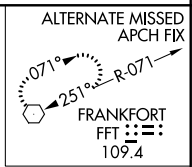
LEXINGTON APP CON  
**120.75 298.9**

CLNC DEL  
**118.65**

UNICOM  
**122.8 (CTAF) 0**

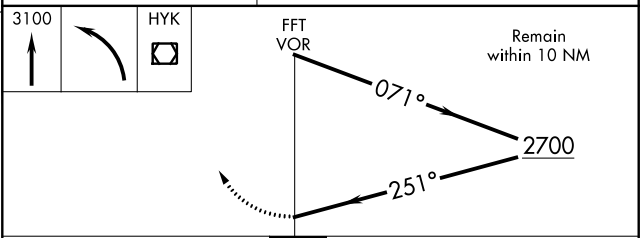
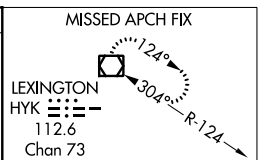
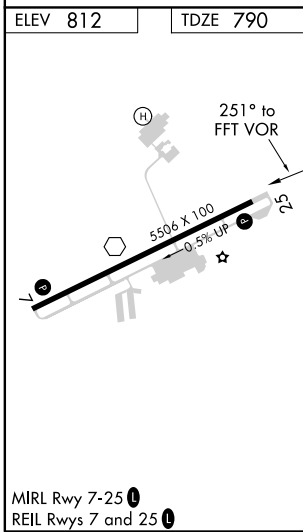


**DME REQUIRED**



SE-1, 15 AUG 2019 to 12 SEP 2019

SE-1, 15 AUG 2019 to 12 SEP 2019



| CATEGORY          | A      | B           | C                             | D                     |
|-------------------|--------|-------------|-------------------------------|-----------------------|
| S-25              | 1440-1 | 650 (700-1) | 1440-1 7/8                    | 650 (700-1 7/8)       |
| <b>C</b> CIRCLING | 1440-1 | 628 (700-1) | 1440-1 7/8<br>628 (700-1 7/8) | 1440-2<br>628 (700-2) |