

# ILS or LOC/DME RWY 35

MONROE COUNTY (BMG)

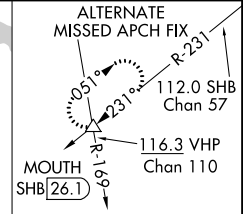
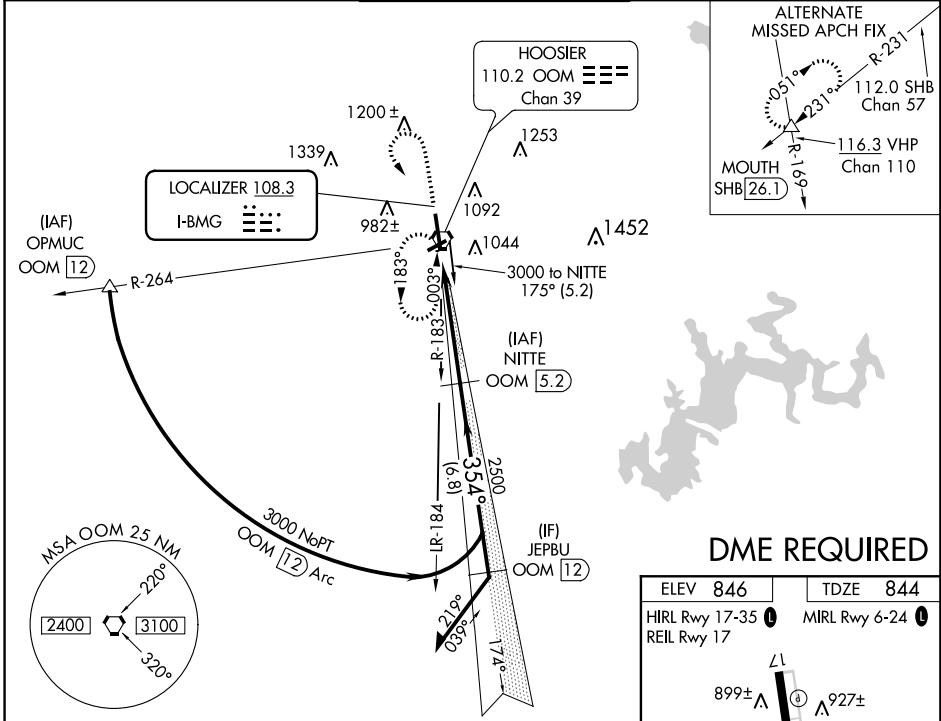
LOC I-BMG <b>108.3</b>	APP CRS <b>354°</b>	Rwy Idg TDZE Apt Elev	<b>6500</b> <b>844</b> <b>846</b>
---------------------------	------------------------	-----------------------------	-----------------------------------------

**⚠** Circling to Rwy 6/24 NA at night. When local altimeter setting not received, use Terre Haute Rgnl altimeter setting and increase all DA 121 feet and all MDA 140 feet and increase S-ILS 35 all Cats visibility 1/4 mile, S-LOC 35 Cat C, D and Circling Cat C visibility 1/2 mile and Circling Cat D visibility 1/4 mile. For inoperative MALSR when using Terre Haute Rgnl altimeter setting: increase S-ILS 35 all Cats visibility to 1 1/4 miles. DME from OOM VORTAC. Simultaneous reception of I-BMG and OOM DME required.



**MISSED APPROACH:**  
Climb to 2000 then climbing left turn to 2500 direct OOM VORTAC and hold.

ASOS <b>110.2</b>	HULMAN APP CON <b>128.025 339.8</b>	<b>BLOOMINGTON TOWER *</b> <b>120.775 (CTAF) 0</b>	GND CON <b>121.9</b>	UNICOM <b>122.95</b>
----------------------	----------------------------------------	-------------------------------------------------------	-------------------------	-------------------------



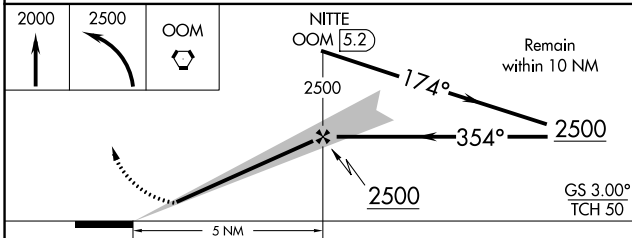
EC-2. 15 AUG 2019 to 12 SEP 2019

EC-2. 15 AUG 2019 to 12 SEP 2019

## DME REQUIRED

ELEV 846	TDZE 844
HIRL Rwy 17-35	MIRL Rwy 6-24
REIL Rwy 17	

FAF to MAP 5 NM					
Knots	60	90	120	150	180
Min:Sec	5:00	3:20	2:30	2:00	1:40



CATEGORY	A	B	C	D
S-ILS 35	1044-1/2 200 (200-1/2)			
S-LOC 35	1420-1/2 576 (600-1/2)		1420-1 576 (600-1)	1420-1 1/4 576 (600-1 1/4)
CIRCLING	1420-1 574 (600-1)		1420-1 1/2 574 (600-1 1/2)	1420-2 574 (600-2)