

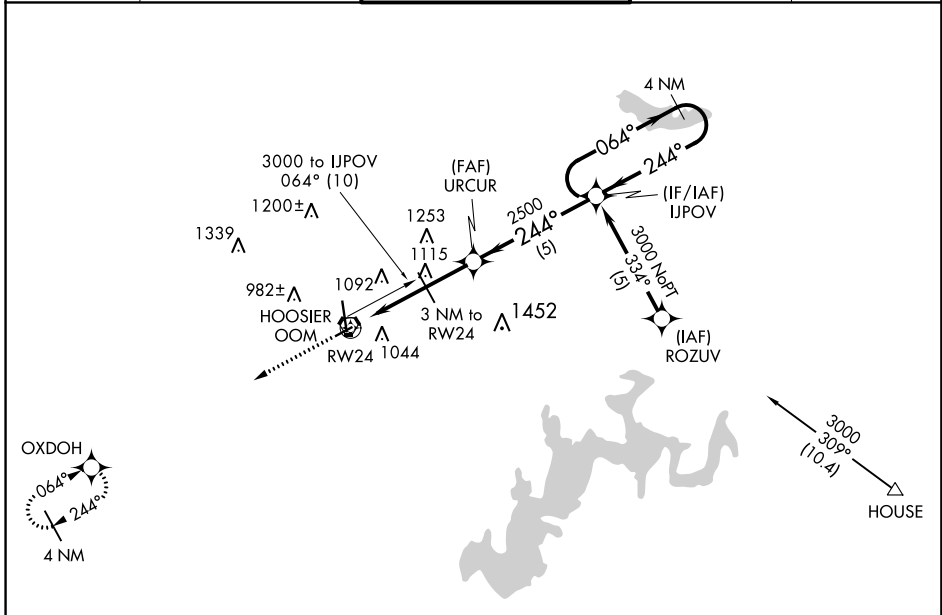
APP CRS <b>244°</b>	Rwy Idg <b>3576</b>
	TDZE <b>841</b>
	Aprt Elev <b>846</b>

# RNAV (GPS) RWY 24

MONROE COUNTY (BMG)

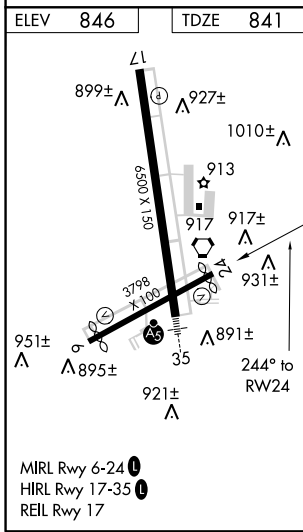
RNP APCH.		MISSED APPROACH: Climb to 3000 direct OXDOH WP and hold.		
<p>▼ Rwy 24 helicopter visibility reduction below 1 SM NA. Procedure NA at night.</p> <p>▲ When local altimeter setting not received use Terre Haute Rgnl altimeter setting and increase all MDA 140 feet; increase LNAV Cat C/D ½ mile.</p>				

ASOS <b>110.2</b>	HULMAN APP CON <b>128,025 339.8</b>	BLOOMINGTON TOWER * <b>120.775 (CTAF) 0</b>	GND CON <b>121.9</b>	UNICOM <b>122.95</b>
----------------------	----------------------------------------	------------------------------------------------	-------------------------	-------------------------



EC-2, 15 AUG 2019 to 12 SEP 2019

EC-2, 15 AUG 2019 to 12 SEP 2019



3000	OXDOH	VGSI and descent angle not coincident (VGSI Angle 4.00/TCH 49).	IJPOV	4 NM Holding Pattern
↑	✧			
RW24		URCUR	IJPOV	3000
3 NM to RW24		2500	064°	←244°
1840 ≤ 3.06° TCH 31				
3 NM		2 NM	5 NM	
CATEGORY	A	B	C	D
LNAV MDA	1320-1	479 (500-1)	1320-1¼ 479 (500-1¼)	1320-1½ 479 (500-1½)