


|  |                        |                             |   |
|--|------------------------|-----------------------------|---|
| WAAS<br>CH <b>72812</b><br><b>W35A</b> | APP CRS<br><b>354°</b> | Rwy Idg<br>TDZE<br>Apt Elev | <b>6500</b><br><b>844</b><br><b>846</b> |
|--|------------------------|-----------------------------|---|

# RNAV (GPS) RWY 35

MONROE COUNTY (BMG)

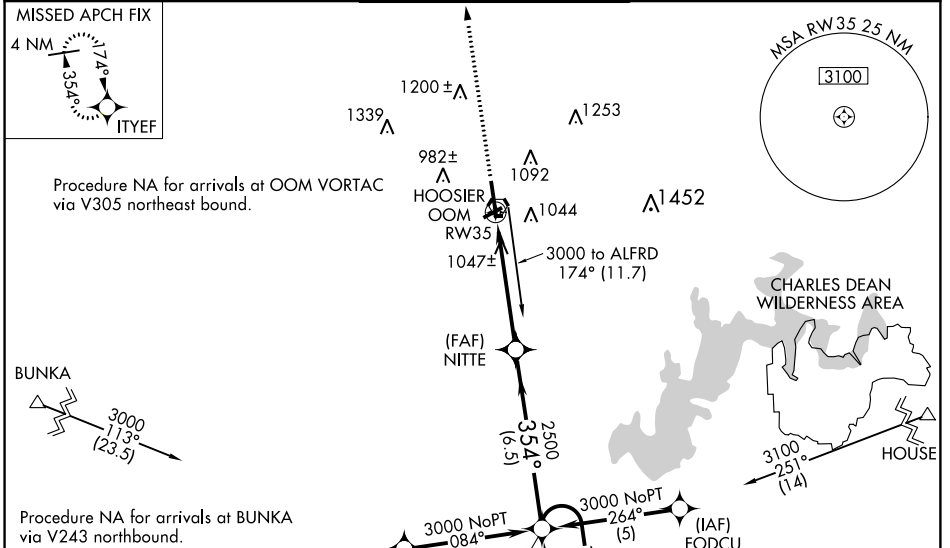
**▼** For uncompensated Baro-VNAV systems, LNAV/VNAV NA below -16°C (4°F) or above 47°C (116°F). DME/DME RNP-0.3 NA. When local altimeter setting not received, use Terre Haute Rgnl altimeter setting and increase all DA 121 feet and all MDA 140 feet and increase LPV all Cats, LNAV Cat C, D and Circling Cat D visibility ½ mile, LNAV/VNAV all Cats and Circling C visibility ½ mile. For inoperative MALSR when using Terre Haute Rgnl altimeter setting; increase LPV all Cats visibility ½ mile. Baro-VNAV and VDP NA when using Terre Haute Rgnl altimeter setting. Circling to Rwy 6/24 NA at night.

**MALSR**

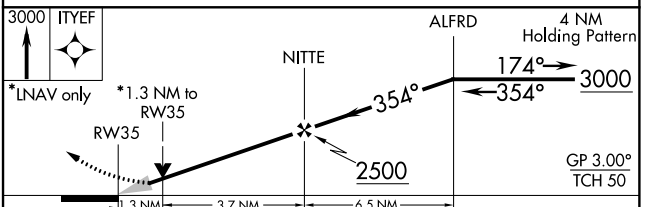
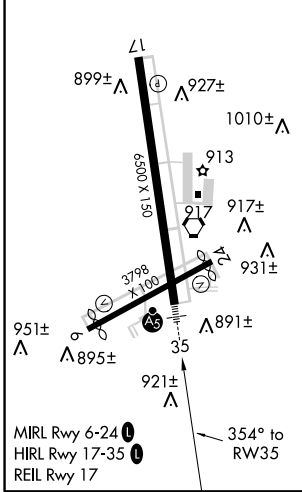


**MISSED APPROACH:**  
Climb to 3000 direct ITYEF and hold.

|                      |  |   |                         |                         |
|----------------------|--|---|-------------------------|-------------------------|
| ASOS<br><b>110.2</b> | HULMAN APP CON<br><b>128.025 339.8</b> | <b>BLOOMINGTON TOWER *</b><br><b>120.775 (CTAF)</b>  | GND CON<br><b>121.9</b> | UNICOM<br><b>122.95</b> |
|----------------------|--|---|-------------------------|-------------------------|



|                 |                 |
|-----------------|-----------------|
| ELEV <b>846</b> | TDZE <b>844</b> |
|-----------------|-----------------|



| CATEGORY     | A                     | B                     | C                             | D                     |
|--------------|-----------------------|-----------------------|-------------------------------|-----------------------|
| LPV DA       |                       | 1044-1/2              | 200 (200-1/2)                 |                       |
| LNAV/VNAV DA |                       | 1344-1 1/4            | 500 (500-1 1/4)               |                       |
| LNAV MDA     | 1300-1/2              | 456 (500-1/2)         | 1300-3/4<br>456 (500-3/4)     | 1300-1<br>456 (500-1) |
| CIRCLING     | 1380-1<br>534 (600-1) | 1400-1<br>554 (600-1) | 1400-1 1/2<br>554 (600-1 1/2) | 1400-2<br>554 (600-2) |

EC-2: 15 AUG 2019 to 12 SEP 2019

EC-2: 15 AUG 2019 to 12 SEP 2019