

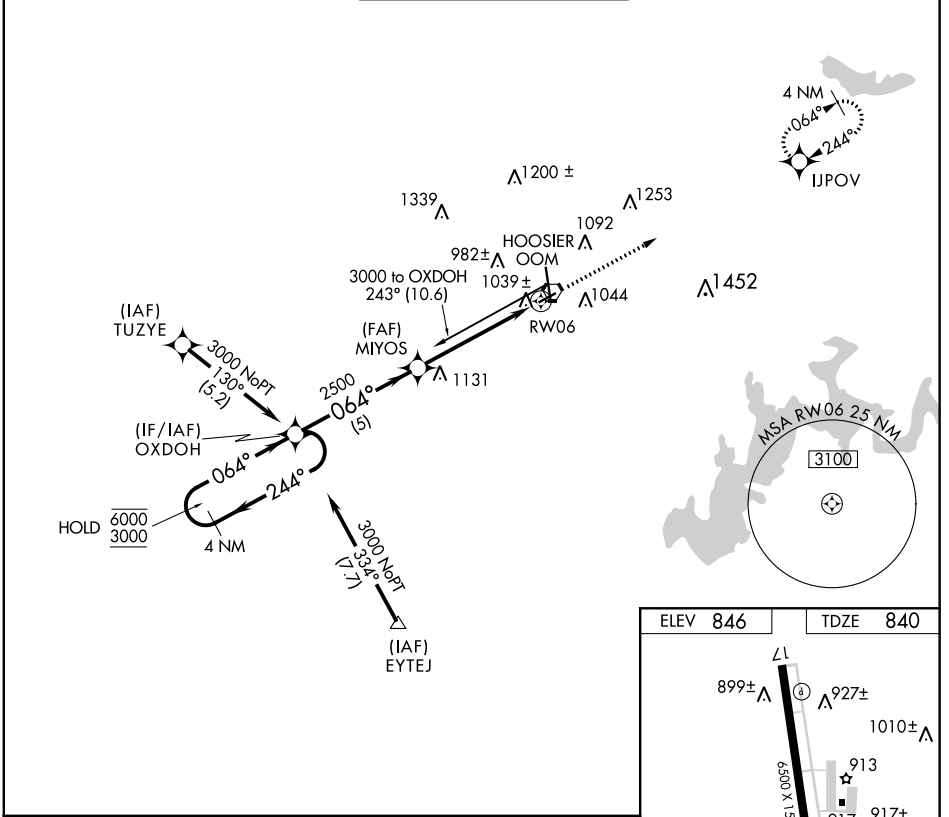
APP CRS	Rwy Idg	3494
064°	TDZE	840
	Apt Elev	846

RNAV (GPS) RWY 6

MONROE COUNTY (BMG)

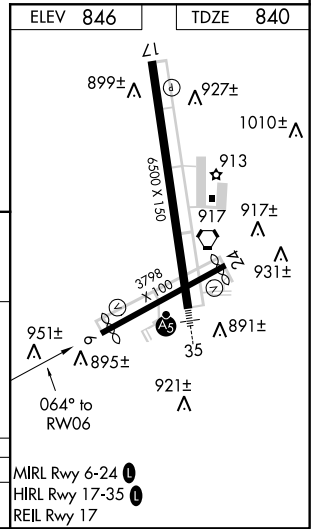
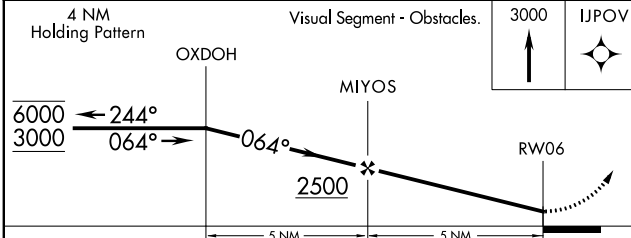
RNP APCH.		MISSED APPROACH: Climb to 3000 direct IJPOV and hold.		
<p>Procedure NA at night. Rwy 6 helicopter visibility reduction below 1 SM NA.</p>				

ASOS 110.2	HULMAN APP CON 128.025 339.8	BLOOMINGTON TOWER * 120.775 (CTAF)	GND CON 121.9	UNICOM 122.95
----------------------	--	--	-------------------------	-------------------------



EC-2, 15 AUG 2019 to 12 SEP 2019

EC-2, 15 AUG 2019 to 12 SEP 2019



CATEGORY	A	B	C	D
INAV MDA	1300-1	460 (500-1)	1300-1¼ 460 (500-1¼)	1300-1½ 460 (500-1½)