

WAAS CH <b>82221</b> <b>W26A</b>	APP CRS <b>259°</b>	Rwy Idg TDZE <b>564</b> Apt Elev <b>564</b>
--	------------------------	---

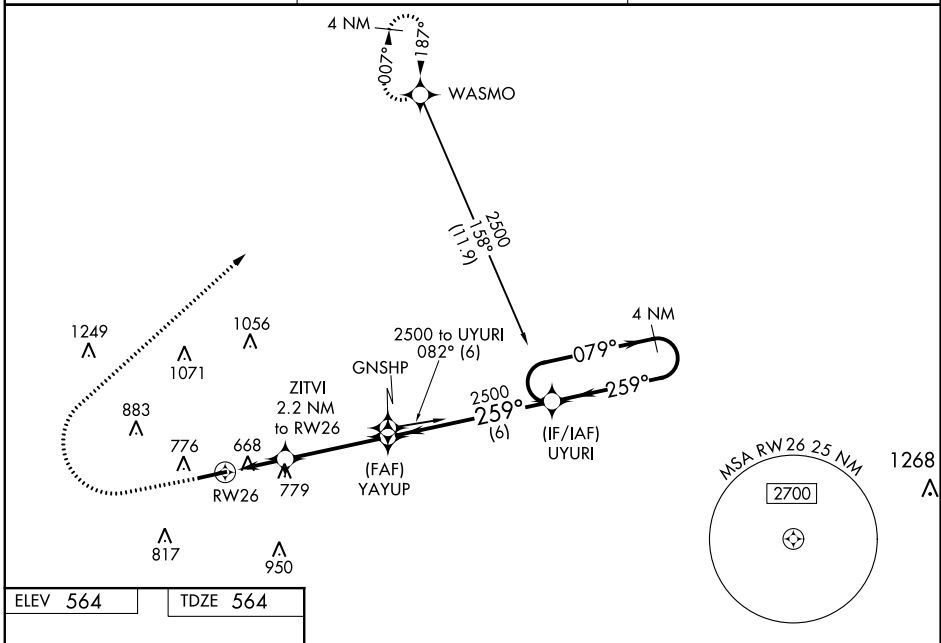
# RNAV (GPS) RWY 26

HOPKINSVILLE-CHRISTIAN COUNTY (HVC)

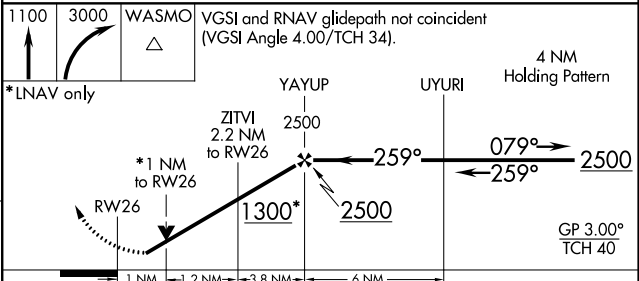
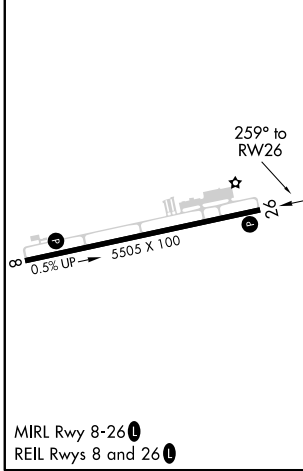
**⚠️** Night landing: Rwy 8 NA. For uncompensated Baro-VNAV systems, LNAV/VNAV NA below -16°C (4°F) or above 54°C (130°F). Baro-VNAV and VDP NA when using Clarksville altimeter setting. DME/DME RNP-0.3 NA. Helicopter visibility reduction below 3/4 SM NA. When local altimeter setting not received, use Clarksville altimeter setting and increase LPV DA to 285 feet and all visibilities 1/8 mile; increase LNAV/VNAV DA to 467 feet and all visibilities 1/8 mile; increase all MDA 40 feet and Circling Cat C visibility 1/4 mile.

**MISSED APPROACH:**  
Climb to 1100 then climbing right turn to 3000 direct WASMO and hold.

AWOS-3 <b>132.575</b>	CAMPBELL APP CON <b>118.1 269.525</b>	UNICOM <b>122.8 (CTAF) ☺</b>
--------------------------	--	---------------------------------



ELEV <b>564</b>	TDZE <b>564</b>
-----------------	-----------------



CATEGORY	A	B	C	D
LPV DA		814-7/8	250 (300-7/8)	
LNAV/ VNAV DA		996-1 1/2	432 (500-1 1/2)	
LNAV MDA	1040-1	476 (500-1)	1040-1 3/8	476 (500-1 3/8)
<b>C</b> CIRCLING	1140-1	576 (600-1)	1280-2 716 (800-2)	1320-2 1/2 756 (800-2 1/2)

SE-1, 15 AUG 2019 to 12 SEP 2019

SE-1, 15 AUG 2019 to 12 SEP 2019