

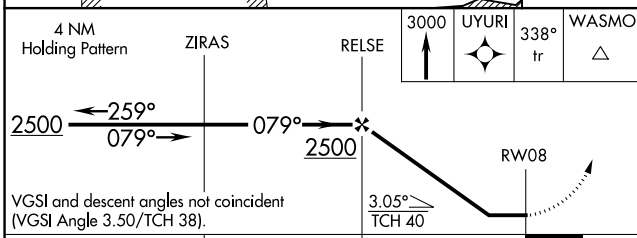
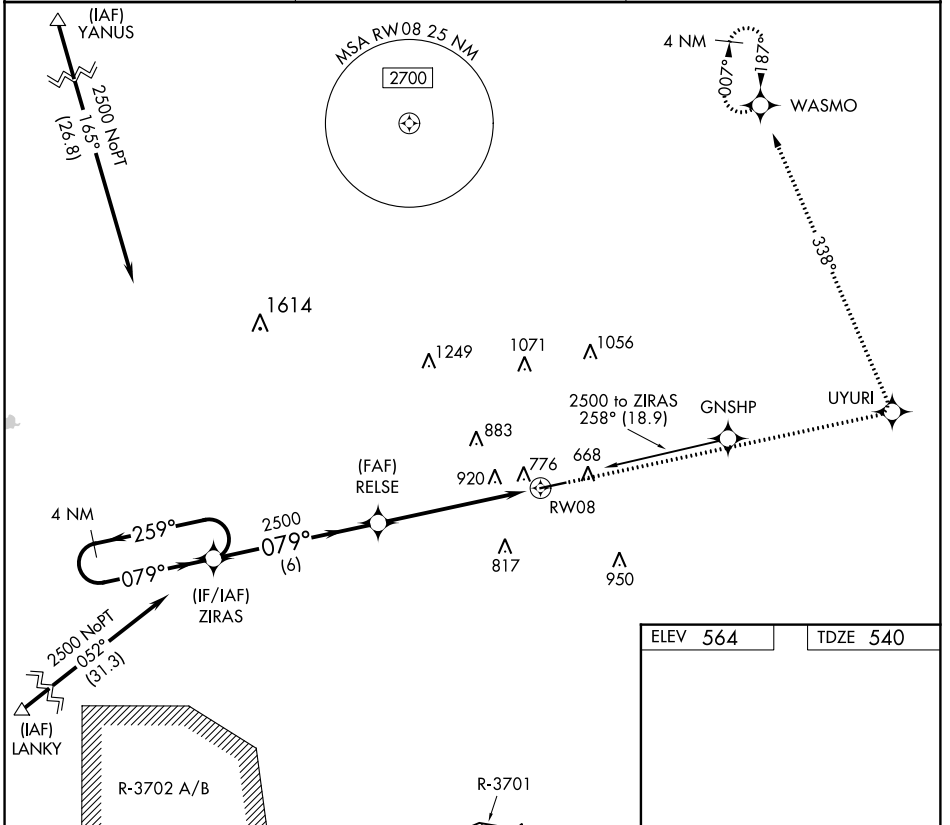
APP CRS	Rwy Idg	5505
079°	TDZE	540
	Apt Elev	564

RNAV (GPS) RWY 8

HOPKINSVILLE-CHRISTIAN COUNTY (HVC)

RNP APCH.	Rwy 8 helicopter visibility reduction below 1 SM NA. When local altimeter setting not received, use Clarksville altimeter setting and increase all MDA 40 feet. Procedure NA at night.	MISSED APPROACH: Climb to 3000 direct UYURI and left turn via 338° track to WASMO and hold.
-----------	--	---

AWOS-3 132.575	CAMPBELL APP CON 118.1 269.525	UNICOM 122.8 (CTAF) 0
--------------------------	--	---------------------------------



ELEV 564	TDZE 540
----------	----------

Diagram of RWY 8 showing a 0.5% UP slope and 5505 X 100 dimensions. The runway is oriented at 079° to RWY 08.

CATEGORY	A	B	C	D
LNVA MDA	1220-1	680 (700-1)	1220-2	1220-2 1/4
			680 (700-2)	680 (700-2 1/4)

MIRL Rwy 8-26 0
REIL Rwy 8 and 26 0

SE-1, 15 AUG 2019 to 12 SEP 2019

SE-1, 15 AUG 2019 to 12 SEP 2019