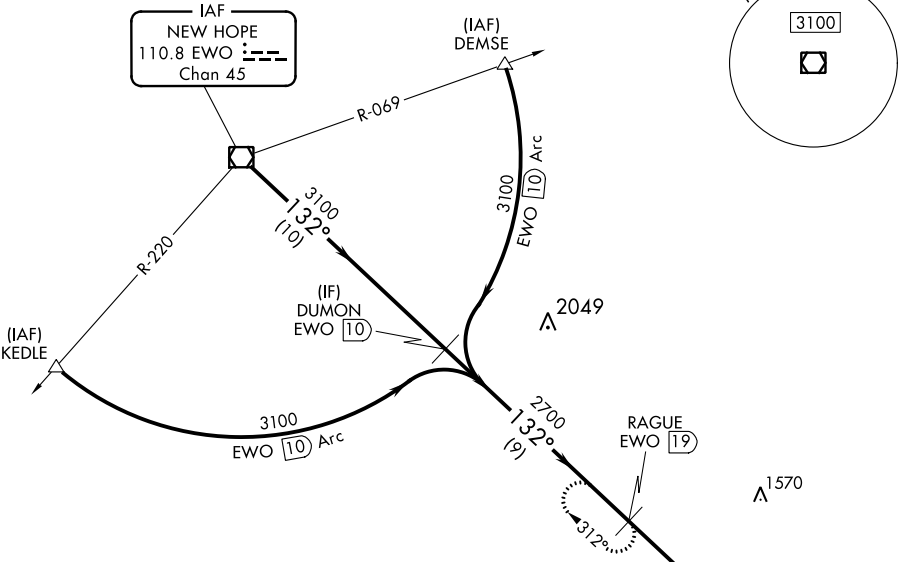


VOR/DME EWO <b>110.8</b> Chan <b>45</b>	APP CRS <b>132°</b>	Rwy Idg TDZE Apt Elev <b>N/A</b> <b>N/A</b> <b>921</b>
---	------------------------	---

**VOR/DME-A**  
TAYLOR COUNTY (A.A.S)

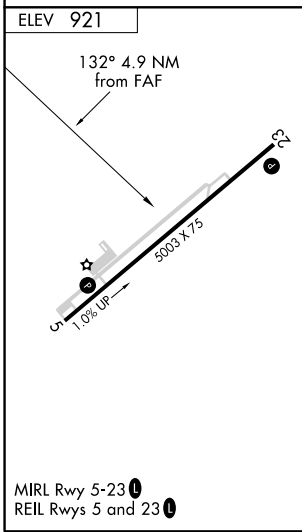
<p><b>NA</b> When local altimeter setting not received, use Somerset altimeter setting: increase all MDA 100 feet; increase Cat C visibility 1/4 mile and Cat D visibility 1/2 mile.</p>	<p>MISSED APPROACH: Climbing right turn to 3100 on heading 360° and on EWO R-132 to RAGUE/19 DME and hold.</p>	
<p>AWOS-3 <b>121.125</b></p>	<p>INDIANAPOLIS CENTER <b>121.175 353.65</b></p>	<p>UNICOM <b>122.7 (CTAF) 0</b></p>

**DME REQUIRED**



SE-1, 15 AUG 2019 to 12 SEP 2019

SE-1, 15 AUG 2019 to 12 SEP 2019



EWO VOR/DME <b>3100</b>	DUMON EWO <b>10</b>	RAGUE EWO <b>19</b>	3100	EWO R-132	RAGUE EWO <b>19</b>
			hdg 360°		
3100 — 132° — 3100		2700	MUMOE EWO <b>23.9</b>		
10 NM			9 NM		4.9 NM
CATEGORY	A	B	C	D	
<b>C</b> CIRCLING	1540-1	619 (700-1)	1540-1 3/4 619 (700-1 3/4)	1660-2 1/4 739 (800-2 1/4)	