

VORTAC VHP 116.3 Chan 110	APP CRS 201°	Rwy Idg 5500 TDZE 922 Apt Elev 922
---	------------------------	---

VOR RWY 18

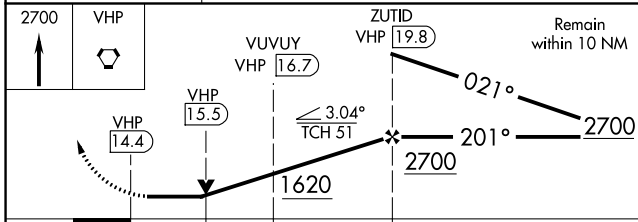
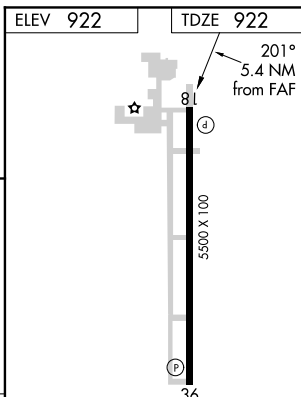
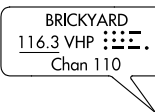
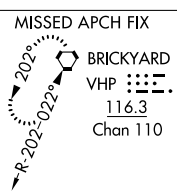
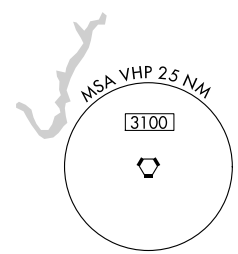
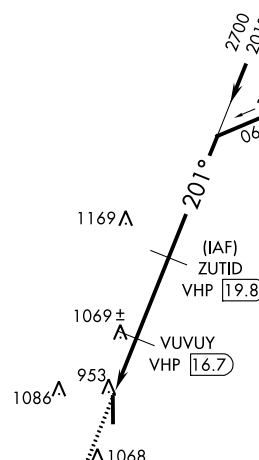
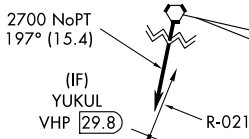
INDIANAPOLIS EXECUTIVE (TYQ)

▼ Rwy 18 helicopter visibility reduction below 3/4 SM NA. DME required. When local altimeter setting not received, use Indianapolis Intl altimeter setting and increase all MDA 80 feet and S-18 Cats C/D visibilities 1/4 mile. VDP NA when using Indianapolis Intl altimeter setting.

MISSED APPROACH: Climb to 2700 direct VHP VORTAC and hold.

AWOS-3PT 120.725	INDIANAPOLIS APP CON 124.65 127.15 317.8	GCO 121.725	UNICOM 123.05 (CTAF) 0
----------------------------	--	-----------------------	---

Procedure NA for arrivals at OKK VORTAC on V305 northbound.



CATEGORY	A	B	C	D
S-18	1320-1 398 (400-1)		1320-1½ 398 (400-1½)	
CIRCLING	1360-1 438 (500-1)	1380-1 458 (500-1)	1400-1½ 478 (500-1½)	1480-2 558 (600-2)

HIRL Rwy 18-36 **0**
REIL Rwys 18 and 36 **0**

EC-2, 15 AUG 2019 to 12 SEP 2019

EC-2, 15 AUG 2019 to 12 SEP 2019