

LOC/DME I-OYM 108.9 Chan 26	APP CRS 281°	Rwy Idg TDZE Apt Elev 4300 1934 1934
------------------------------------------	------------------------	--------------------------------------------------------------------------

LOC RWY 28
ST MARYS MUNI (OYM)

DME required.

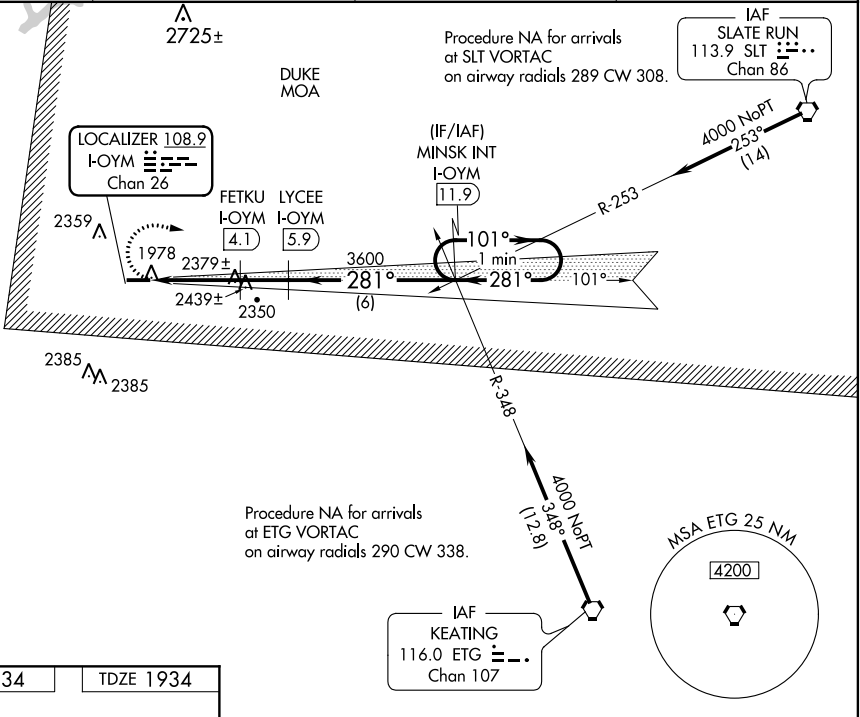
NA Inop table does not apply to Cat A. Rwy 28 helicopter visibility reduction below 3/4 SM NA. VDP NA when using Bradford altimeter setting. When local altimeter setting not received, use Bradford altimeter setting and increase all MDA 240 feet, and S-28 Cat B and Circling Cat A/B/D visibility 1/4 SM and S-28 Cat C/D and Circling Cat C 1/2 SM. For inop ALS, increase S-28 Cat C/D visibility to 2 1/2 SM. For inop ALS when using Bradford altimeter setting, increase S-28 Cat C/D visibility to 3 SM.

MALS

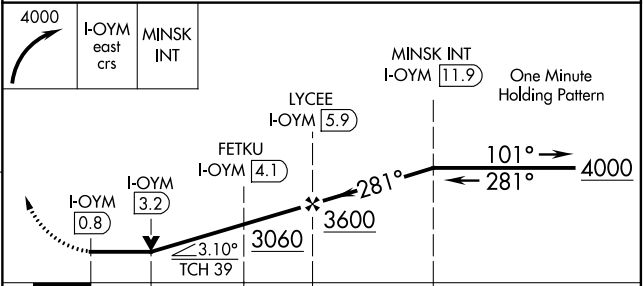
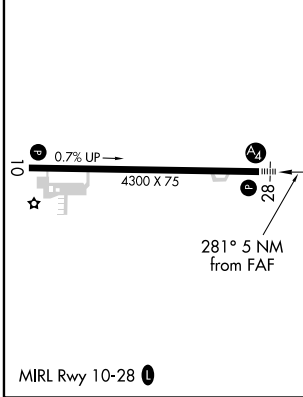


MISSED APPROACH:
Climbing right turn to 4000 on I-OYM east course to MINSK INT/ 11.9 DME and hold.

AWOS-3P 118.05	CLEVELAND CENTER 124.325 353.85	ALTOONA CLNC DEL 122.4	UNICOM 122.7 (CTAF) 0
--------------------------	-------------------------------------------	----------------------------------	----------------------------------------



ELEV 1934	TDZE 1934
-----------	-----------



CATEGORY	A	B	C	D
S-28	2740-1	806 (900-1)	2740-2	806 (900-2)
CIRCLING	2740-1 806 (900-1)	2740-1 1/4 806 (900-1 1/4)	2740-2 1/2 806 (900-2 1/2)	2800-2 3/4 866 (900-2 3/4)

NE-4, 15 AUG 2019 to 12 SEP 2019

NE-4, 15 AUG 2019 to 12 SEP 2019