

WAAS CH 82302 W28A	APP CRS 281°	Rwy Idg TDZE Apt Elev	4300 1934 1934
----------------------------------------	------------------------	-----------------------------	-------------------------------------------

RNAV (GPS) RWY 28

ST MARYS MUNI (OYM)

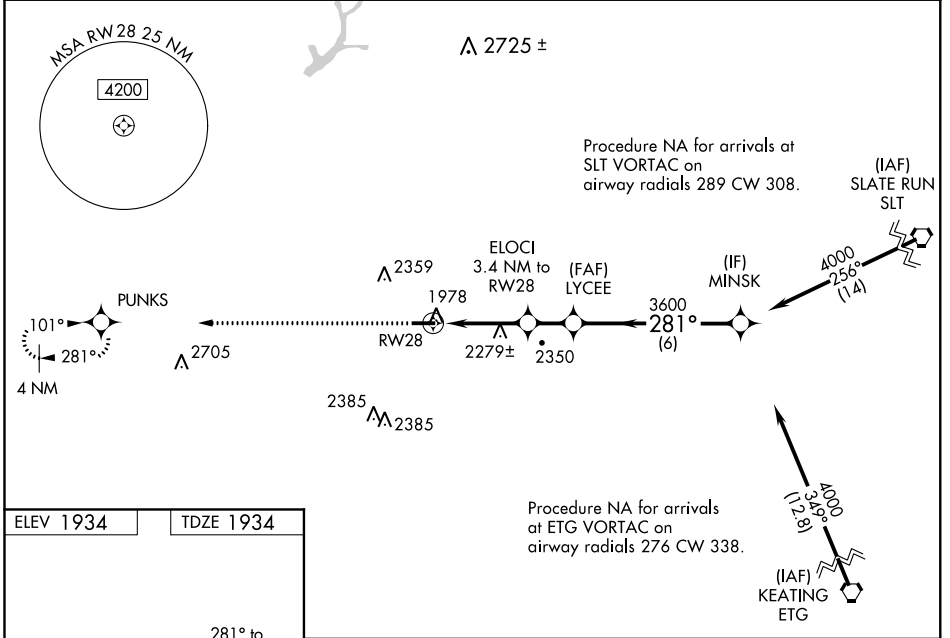
RNP APCH.

NA Rwy 28 helicopter visibility reduction below 3/4 SM NA. Inop table does not apply to LPV all cats and LNAV Cat A/B. VDP NA when using Bradford altimeter setting. When local altimeter setting not received, use Bradford altimeter setting and increase all DA/MDA 240 feet, LPV all cats visibility 3/8 SM, LNAV Cat C/D 3/4 SM, and Circling Cat A/D 1/4 SM and Cat B 1/2 SM and Cat C 1 SM. When using Bradford altimeter setting, inop table does not apply to LNAV Cat C/D. For inop ALS when using Bradford altimeter setting, increase LPV all Cats visibility to 1 1/4 SM and LNAV Cat A/B to 1 1/4 SM.

MALS

MISSED APPROACH: Climb to 4000 direct PUNKS and hold.

AWOS-3P 118.05	CLEVELAND CENTER 124.325 353.85	ALTOONA CLNC DEL 122.4	UNICOM 122.7 (CTAF)
--------------------------	-------------------------------------------	----------------------------------	-------------------------------



ELEV 1934 TDZE 1934

281° to RWY 28

0.7% UP

4300 X 75

MIRL Rwy 10-28

4000	PUNKS	ELOCI 3.4 NM to RWY 28	LYCEE 3600	MINSK 4000
*LNAV only.		*2.1 NM to RWY 28	*3040	3600
RWY 28		2.1 NM	1.3 NM	1.6 NM
CATEGORY		A	B	C
LPV DA		2290-1		356 (400-1)
LNAV MDA		2640-1	706 (800-1)	2640-1 3/4 706 (800-1 3/4)
CIRCLING		2640-1 706 (800-1)	2660-1 726 (800-1)	2660-2 726 (800-2)
				2800-2 3/4 866 (900-2 3/4)

GP 3.00° TCH 40

NE-4, 15 AUG 2019 to 12 SEP 2019

NE-4, 15 AUG 2019 to 12 SEP 2019