

VOR/DME EWO 110.8 Chan 45	APP CRS 037°	Rwy Idg TDZE Apt Elev	5003 655 669
--	------------------------	-----------------------------	---

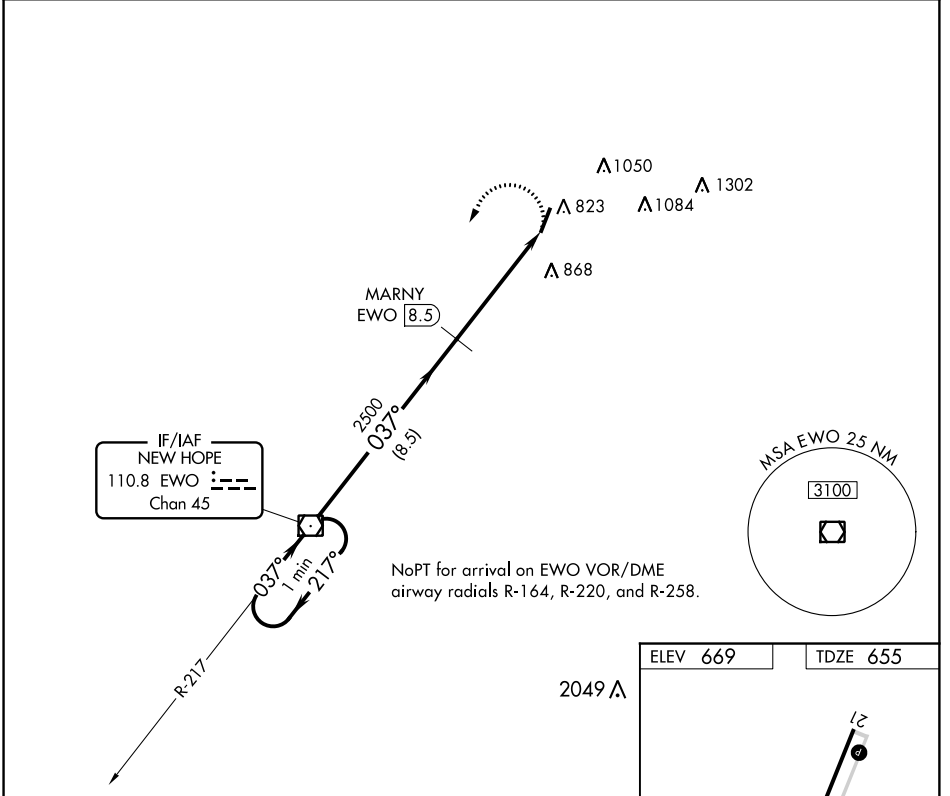
VOR RWY 3

SAMUELS FIELD (BRY)

Straight-in and Circling minimums NA at night.
 Rwy 3 helicopter visibility reduction below 1 SM NA.
 DME required.

MISSED APPROACH: Climbing left turn to 2500 direct EWO VOR/DME and hold.

AWOS-3 119.925	LOUISVILLE APP CON 132.075 327.0	UNICOM 122.8 (CTAF) 0
--------------------------	--	---------------------------------



One Minute Holding Pattern

2500 ← 217° / 037° → 2500

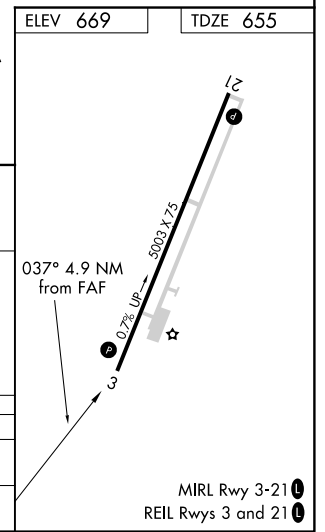
2500 → 037° → MARNY EWO (8.5) → 2500

2500 → 037° → EWO (13.4)

3.50° TCH 41

8.5 NM 4.9 NM

CATEGORY	A	B	C	D
S-3	1200-1	545 (600-1)	1200-1½	545 (600-1½)
CIRCLING	1200-1 531 (600-1)	1260-1 591 (600-1)	1360-2 691 (700-2)	1480-2¾ 811 (900-2¾)



SE-1, 15 AUG 2019 to 12 SEP 2019

SE-1, 15 AUG 2019 to 12 SEP 2019