

WAAS CH <b>65936</b> <b>W18A</b>	APP CRS <b>183°</b>	Rwy Idg TDZE Apt Elev	<b>4359</b> <b>539</b> <b>539</b>
--	------------------------	-----------------------------	---

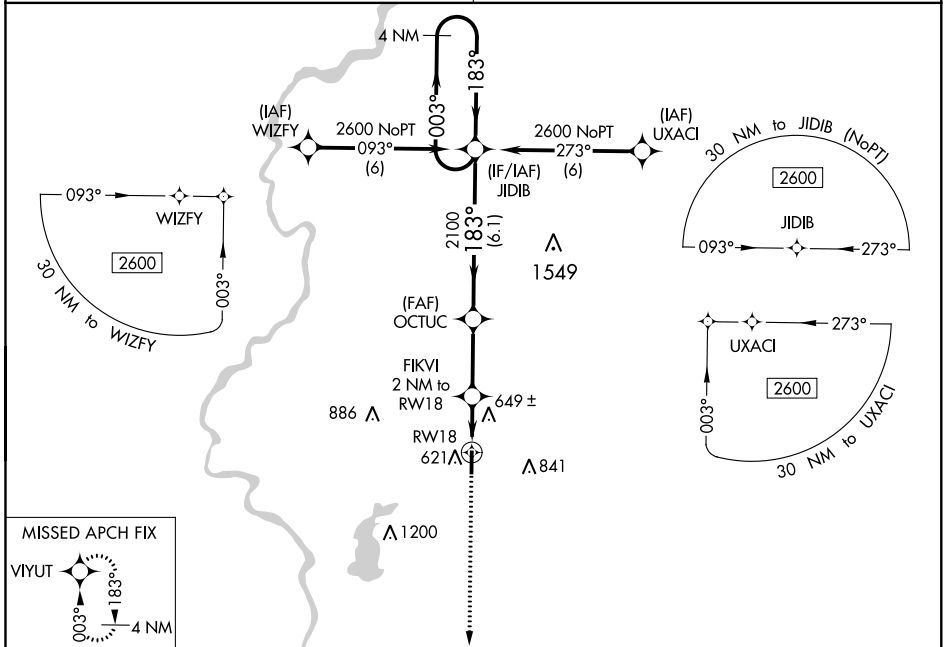
# RNAV (GPS) RWY 18

SULLIVAN COUNTY (SIV)

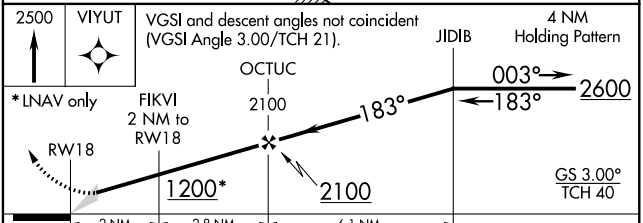
**⚠** Baro-VNAV NA. DME/DME RNP-0.3 NA. When Robinson altimeter setting is not received, use Terre Haute Intl-Hulman Field altimeter setting and increase all DA/MDA 20 feet.

**⚠** NA MISSED APPROACH: Climb to 2500 direct VIYUT and hold.

HULMAN APP CON <b>119.25 339.8</b>	UNICOM <b>122.8</b> (CTAF) <b>①</b>
---------------------------------------	--



ELEV 539	TDZE 539
183° to RW18	
81	
4359 X 75	
36	



CATEGORY	A	B	C	D
LPV DA	826-1	287 (300-1)		NA
LNNAV/VNAV DA	826-1	287 (300-1)		NA
LNNAV MDA	940-1	401 (500-1)		NA
CIRCLING	1000-1	1080-1		NA
	461 (500-1)	541 (600-1)		

REIL Rwy 18 and 36 **①**  
MIRL Rwy 18-36 **①**

EC-2. 15 AUG 2019 to 12 SEP 2019

EC-2. 15 AUG 2019 to 12 SEP 2019