

WAAS CH <b>60941</b> <b>W22A</b>	APP CRS <b>227°</b>	Rwy Idg TDZE Apt Elev	<b>5003</b> <b>799</b> <b>800</b>
--	------------------------	-----------------------------	---

# RNAV (GPS) RWY 22

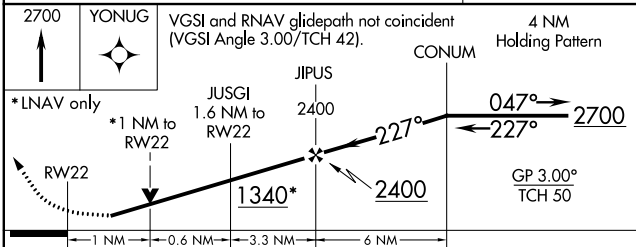
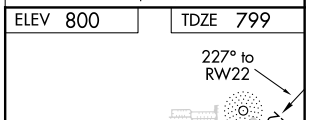
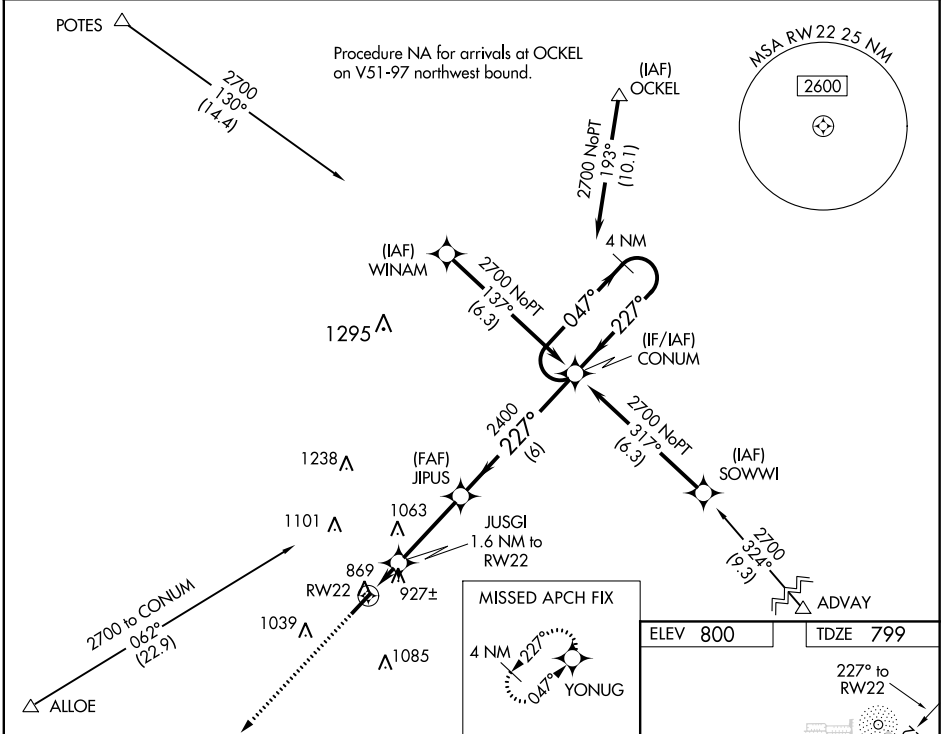
CRAWFORDSVILLE RGNL (CFJ)

RNP APCH.

▼ For uncompensated Baro-VNAV systems, LNAV/VNAV NA below -16°C or above 54°C. Baro-VNAV and VDP NA when using Greencastle altimeter setting. When local altimeter setting not received, use ▲ Greencastle altimeter setting; increase LPV DA to 1104 feet, LNAV/VNAV DA to 1115 feet; increase all MDA 60 feet and visibility Cats C and D ¼ SM. Rwy 22 helicopter visibility reduction below ¾ SM NA.

MISSED APPROACH: Climb to 2700 direct YONUG and hold.

AWOS-3PT <b>125.65</b>	INDIANAPOLIS APP CON <b>119.05 317.8</b>	UNICOM <b>122.8</b> (CTAF) <b>0</b>
---------------------------	---	--



CATEGORY	A	B	C	D
LPV DA		1052-1	253 (300-1)	
LNAV/VNAV DA		1063-1	264 (300-1)	
LNAV MDA	1180-1	381 (400-1)	1180-1½	381 (400-1½)
◻ CIRCLING	1240-1 440 (500-1)	1260-1 460 (500-1)	1440-1¾ 640 (700-1¾)	1520-2¼ 720 (800-2¼)

REIL Rwy 4 and 22 **0**

MIRL Rwy 4-22 **0**

EC-2, 15 AUG 2019 to 12 SEP 2019

EC-2, 15 AUG 2019 to 12 SEP 2019