

WAAS CH 82739 W04A	APP CRS 047°	Rwy Idg TDZE 797 Apt Elev 800	5505
--	------------------------	---	-------------

RNAV (GPS) RWY 4

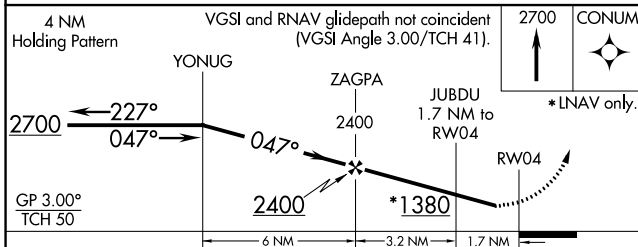
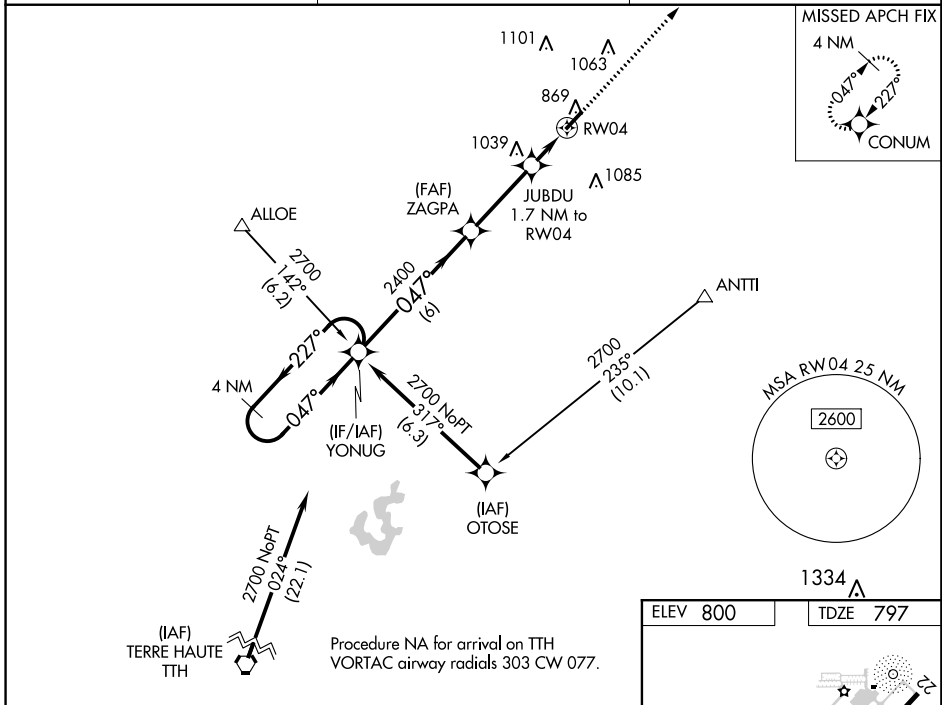
CRAWFORDSVILLE RGNL (CFJ)

RNP APCH.

Baro-VNAV NA when using Greencastle altimeter setting. For uncompensated Baro-VNAV systems, LNAV/VNAV NA below -16°C or above 54°C. When local altimeter setting not received, use Greencastle altimeter setting: increase LPV DA to 1128 feet and all visibilities ¼ SM, LNAV/VNAV DA to 1118 feet and all visibilities ¼ SM; increase all MDA 60 feet and Circling Cats C and D visibilities ¼ SM. Rwy 4 helicopter visibility reduction below ¼ SM NA.

MISSED APPROACH:
Climb to 2700 direct CONUM and hold.

AWOS-3PT 125.65	INDIANAPOLIS APP CON 119.05 317.8	UNICOM 122.8 (CTAF) 0
---------------------------	---	---------------------------------



ELEV 800	TDZE 797
----------	----------

REIL Rwy 4 and 22 0
MIRL Rwy 4-22 0

CATEGORY	A	B	C	D
LPV DA	1076-7/8 279 (300-7/8)			
LNAV/VNAV DA	1066-7/8 269 (300-7/8)			
LNAV MDA	1240-1 443 (500-1)	1240-1 3/8 443 (500-1 3/8)		
CIRCLING	1240-1 440 (500-1)	1260-1 460 (500-1)	1440-1 3/4 640 (700-1 3/4)	1520-2 1/4 720 (800-2 1/4)

EC-2: 15 AUG 2019 to 12 SEP 2019

EC-2: 15 AUG 2019 to 12 SEP 2019