

WAAS CH 90541 W20A	APP CRS 200°	Rwy Idg TDZE Apt Elev	5000 995 996
--	------------------------	-----------------------------	---

RNAV (GPS) RWY 20

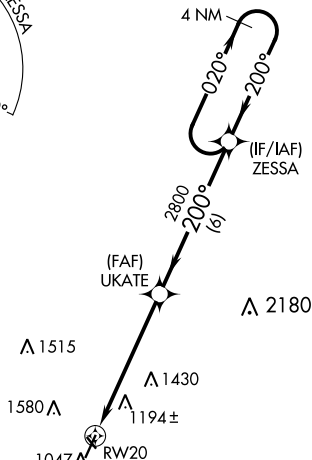
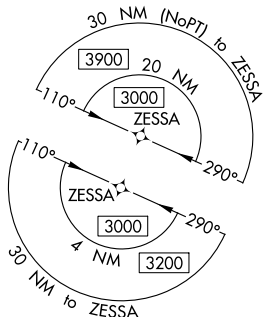
SCHENCK FIELD (ICL)

RNP APCH.

▼ For uncompensated Baro-VNAV systems, LNAV/VNAV NA below -1.6°C (4°F) or above 54°C (130°F).
 ▲ Circling NA west of Rwy 2-20. Circling NA to Rwys 13 and 31.
 Rwy 20 helicopter visibility reduction below ¾ SM NA.

MISSED APPROACH:
 Climb to 3000 direct
 JOGOL and hold.

AWOS-3 132.025	MINNEAPOLIS CENTER 119.6 290.4	UNICOM 122.8 (CTAF)
--------------------------	--	-------------------------------

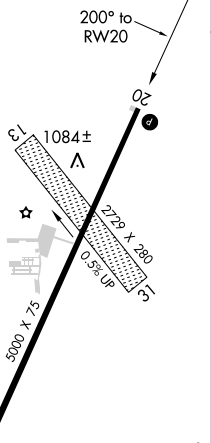


▲ 2180

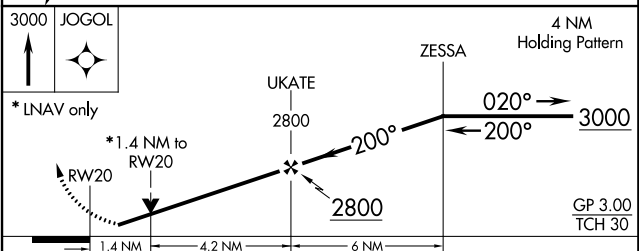
MISSED APCH FIX



ELEV 996	TDZE 995
----------	----------



REIL Rwy 20
 MIRL Rwy 2-20



CATEGORY	A	B	C	D
LPV DA	1261-1		266 (300-1)	
LNAV/VNAV DA	1489-1 ³ / ₈		494 (500-1 ³ / ₈)	
LNAV MDA	1460-1	465 (500-1)	1460-1 ³ / ₈	465 (500-1 ³ / ₈)
<input checked="" type="checkbox"/> CIRCLING	1500-1	504 (600-1)	1780-2 ¹ / ₄ 784 (800-2 ¹ / ₄)	1780-2 ¹ / ₂ 784 (800-2 ¹ / ₂)

NC-3, 15 AUG 2019 to 12 SEP 2019

NC-3, 15 AUG 2019 to 12 SEP 2019