

APP CRS	Rwy Idg	3196
182°	TDZE	313
	Apt Elev	313

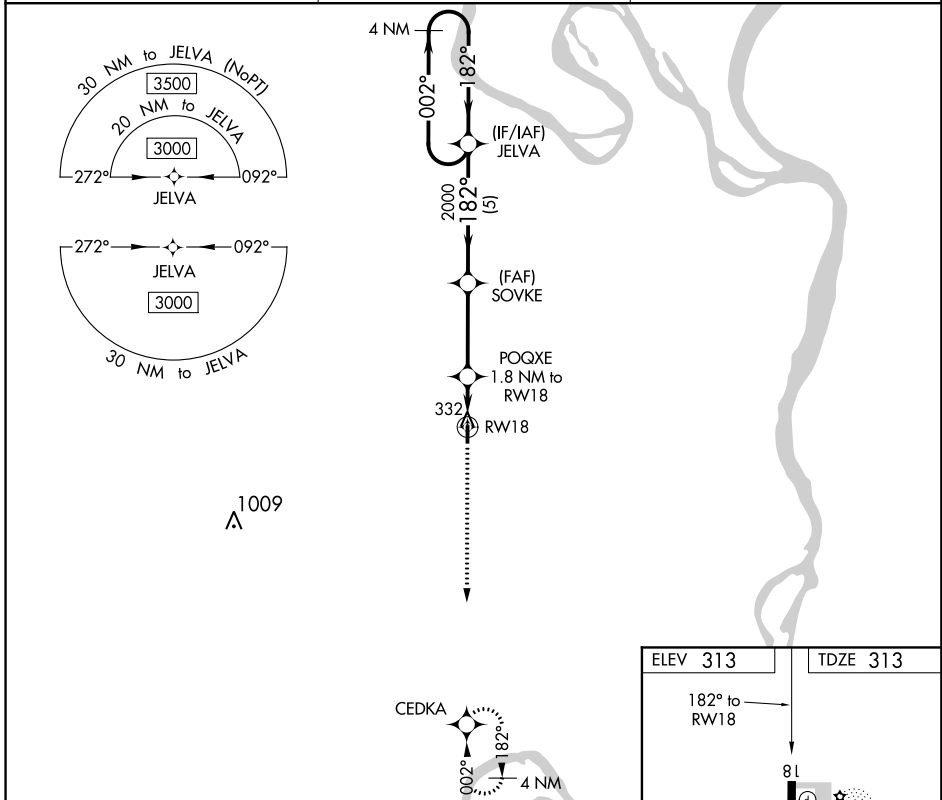
RNAV (GPS) RWY 18

MISSISSIPPI COUNTY (CHQ)

NA DME/DME RNP -0.3 NA. Procedure NA at night. Use Sikeston altimeter setting, if not received use Cairo altimeter setting and increase all MDA 20 feet. Helicopter visibility reduction below 1 SM NA.

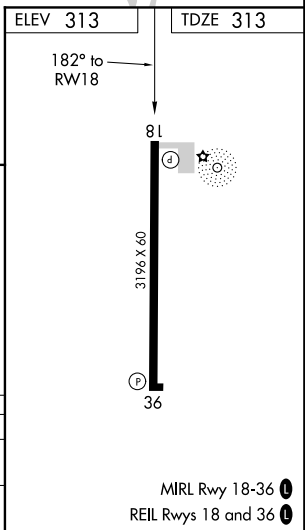
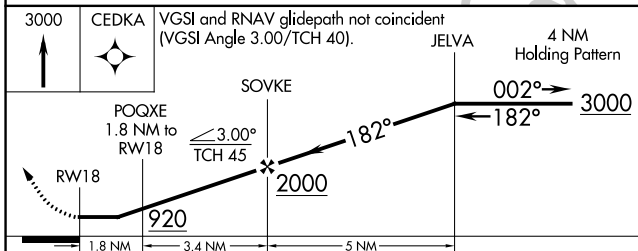
MISSED APPROACH: Climb to 3000 direct CEDKA and hold.

SIKESTON AWOS-3 119.175	MEMPHIS CENTER 133.65 292.15	CTAF 122.9
-----------------------------------	--	----------------------



NC-3, 15 AUG 2019 to 12 SEP 2019

NC-3, 15 AUG 2019 to 12 SEP 2019



CATEGORY	A	B	C	D
LNVA MDA	800-1	487 (500-1)		NA
C CIRCLING	800-1 487 (500-1)	860-1 547 (600-1)		NA