

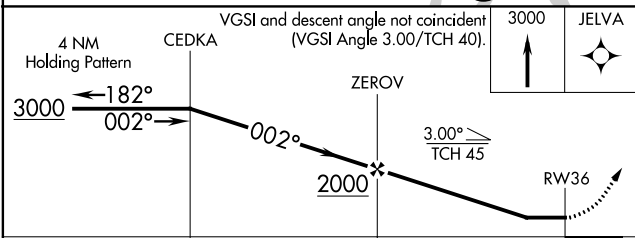
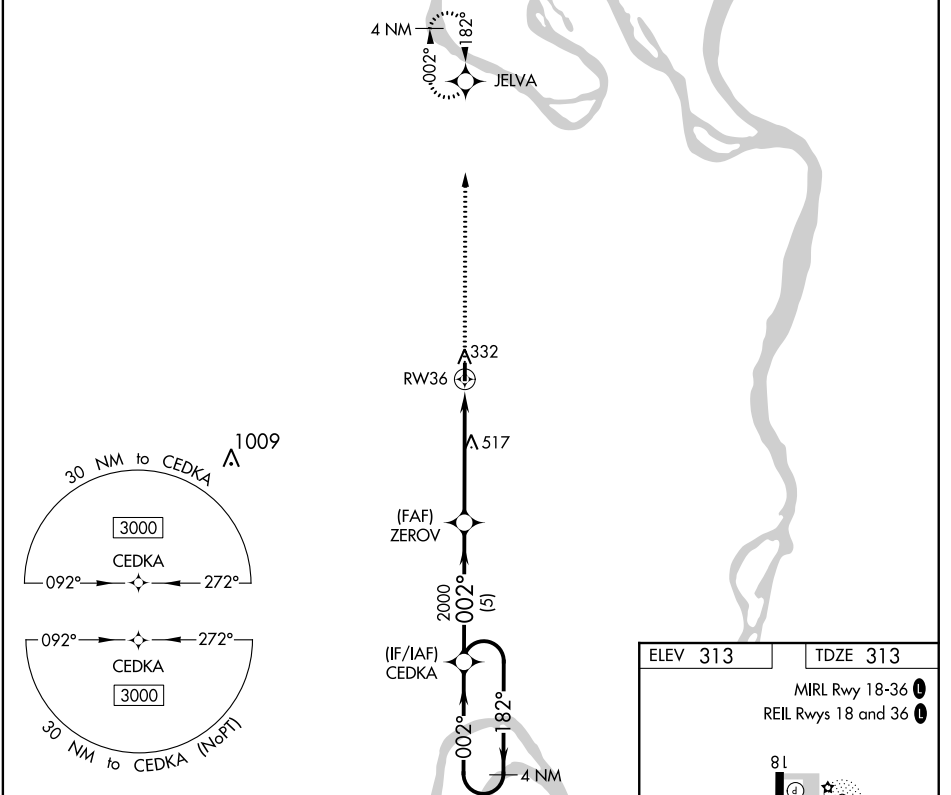
APP CRS	Rwy Idg	3196
002°	TDZE	313
	Apt Elev	313

RNAV (GPS) RWY 36

MISSISSIPPI COUNTY (CHQ)

<p>NA</p> <p>DME/DME RNP-0.3 NA. Procedure NA at night. Use Sikeston altimeter setting, when not received use Cairo, IL altimeter setting and increase all MDA 20 feet. Helicopter visibility reduction below 1 SM NA.</p>	<p>MISSED APPROACH: Climb to 3000 direct JELVA and hold.</p>
---	--

<p>SIKESTON AWOS-3</p> <p>119.175</p>	<p>MEMPHIS CENTER</p> <p>133.65 292.15</p>	<p>CTAF</p> <p>122.9</p>
--	---	---------------------------------



ELEV 313	TDZE 313
<p>MIRL Rwy 18-36</p> <p>REIL Rwys 18 and 36</p>	
<p>002° to RWY 36</p>	

CATEGORY	A	B	C	D
LNVA MDA	800-1	487 (500-1)		NA
CIRCLING	800-1 487 (500-1)	860-1 547 (600-1)		NA

NC-3, 15 AUG 2019 to 12 SEP 2019

NC-3, 15 AUG 2019 to 12 SEP 2019