

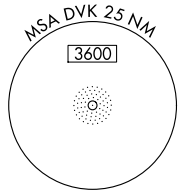
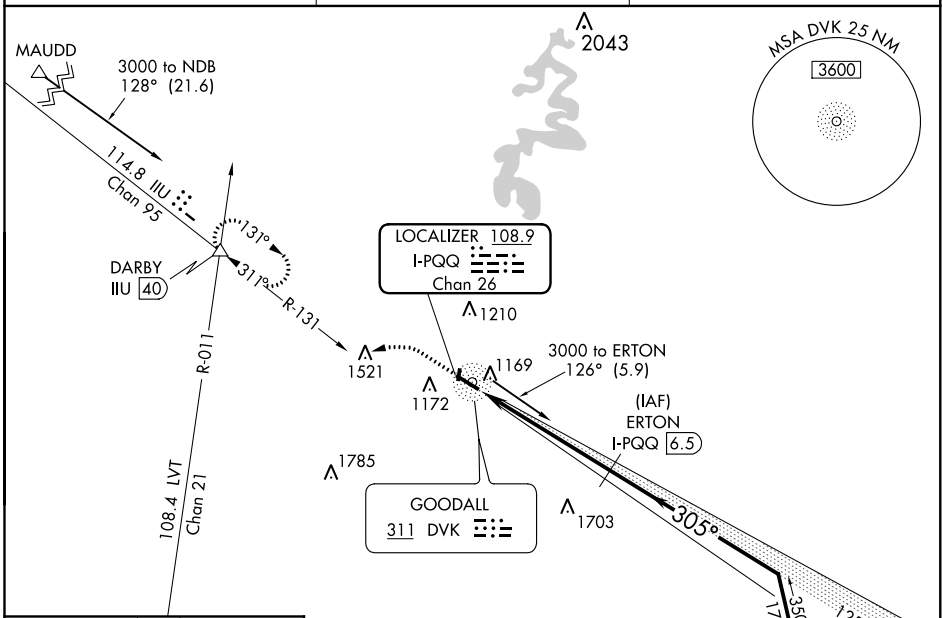
LOC/DME I-PQQ 108.9 Chan 26	APP CRS 305°	Rwy Idg TDZE Apt Elev	5000 1016 1022
---	------------------------	-----------------------------	---

LOC RWY 30
STUART POWELL FIELD (DVK)

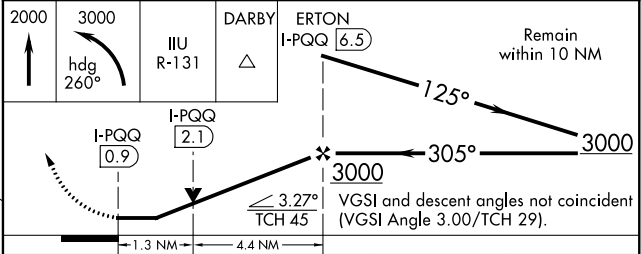
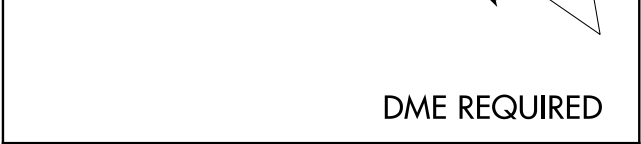
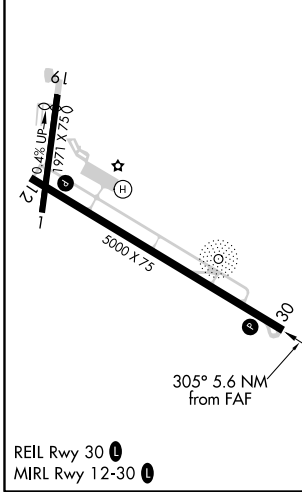
▽ When local altimeter setting not received, use Lexington altimeter setting and increase all MDA 80 feet; increase S-30 Cat C-D visibility and Circling Cat C-D visibility 1/4 mile.
△ NA Rwy 30 helicopter visibility reduction below 3/4 SM NA. Rwy 1, 19 helicopter visibility reduction below 1 SM NA. DME required. Circling Rwy 1, 19 NA at night.

MISSED APPROACH: Climb to 2000 then climbing left turn to 3000 on heading 260° and IIL R-131 to DARBY INT and hold.

AWOS-3 128.325	LEXINGTON APP CON 120.15 259.3	UNICOM 122.8 (CTAF)
--------------------------	--	-------------------------------



ELEV 1022	TDZE 1016
-----------	-----------



CATEGORY	A	B	C	D
S-30	1440-1	424 (500-1)	1440-1 1/4	424 (500-1 1/4)
CIRCLING	1480-1 458 (500-1)	1560-1 538 (600-1)	1560-1 1/2 538 (600-1 1/2)	1720-2 1/4 698 (700-2 1/4)

SE-1, 15 AUG 2019 to 12 SEP 2019

SE-1, 15 AUG 2019 to 12 SEP 2019