

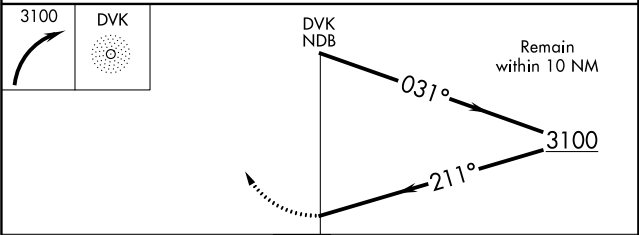
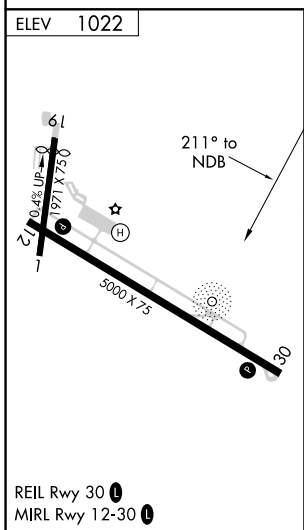
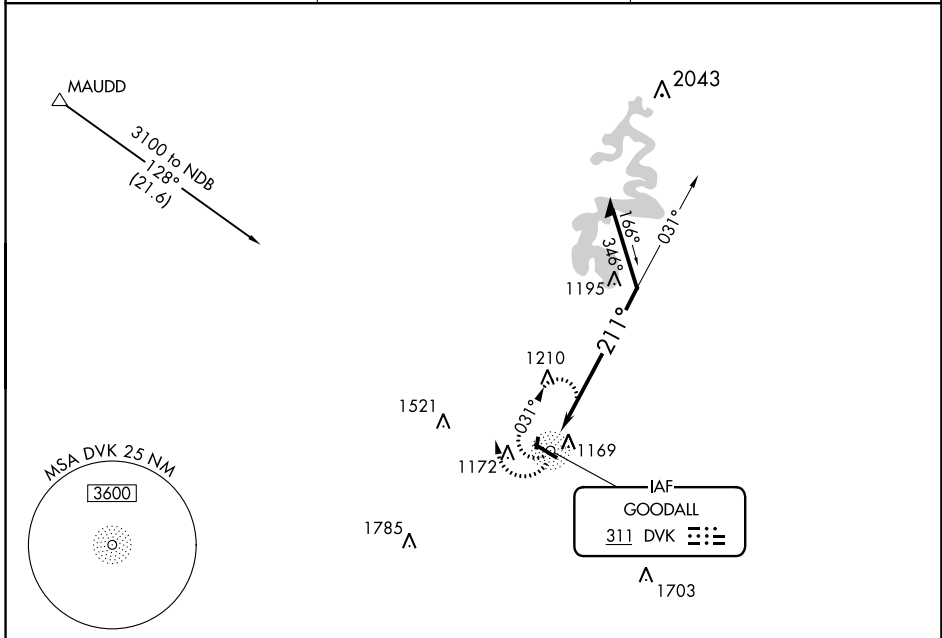
NDB DVK 311	APP CRS 211°	Rwy Idg TDZE Apt Elev	N/A N/A 1022
-----------------------	------------------------	-----------------------------	---

NDB-A
STUART POWELL FIELD (DVK)

⚠ When local altimeter setting not received, use Lexington altimeter setting and increase all MDAs 80 feet and visibility Cats C and D ¼ mile. Rwy 1, 19 helicopter visibility reduction below 1 SM NA. Circling Rwy 1, 19 NA at night.

MISSED APPROACH: Climbing right turn to 3100 in DVK NDB holding pattern.

AWOS-3 128.325	LEXINGTON APP CON 120.15 259.3	UNICOM 122.8 (CTAF) 📞
--------------------------	--	--



CATEGORY	A	B	C	D
CIRCLING	1600-1	578 (600-1)	1600-1½ 578 (600-1½)	1720-2¼ 698 (700-2¼)

SE-1, 15 AUG 2019 to 12 SEP 2019

SE-1, 15 AUG 2019 to 12 SEP 2019