

(OOM5.OOM) 18032

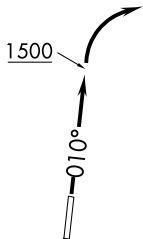
# HOOSIER FIVE DEPARTURE

AL-6614 (FAA)

INDY SOUTH GREENWOOD (HFY)  
INDIANAPOLIS, INDIANA

AWOS-3P  
118.525  
INDIANAPOLIS DEP CON  
124.95 317.8

**TOP ALTITUDE:  
ASSIGNED BY ATC**

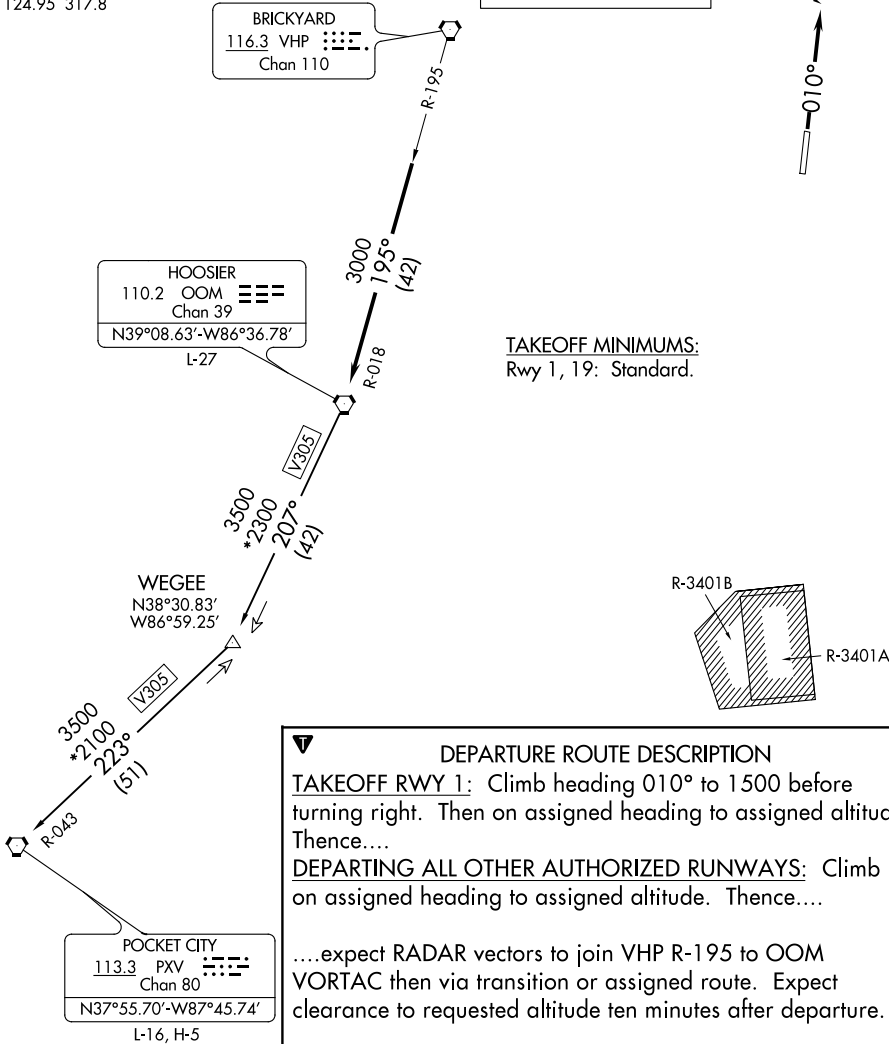


BRICKYARD  
116.3 VHP  
Chan 110

HOOSIER  
110.2 OOM  
Chan 39  
N39°08.63'-W86°36.78'  
L-27

**TAKEOFF MINIMUMS:**  
Rwy 1, 19: Standard.

EC-2: 15 AUG 2019 to 12 SEP 2019



EC-2: 15 AUG 2019 to 12 SEP 2019

**DEPARTURE ROUTE DESCRIPTION**  
**TAKEOFF RWY 1:** Climb heading 010° to 1500 before turning right. Then on assigned heading to assigned altitude. Thence....  
**DEPARTING ALL OTHER AUTHORIZED RUNWAYS:** Climb on assigned heading to assigned altitude. Thence....  
....expect RADAR vectors to join VHP R-195 to OOM VORTAC then via transition or assigned route. Expect clearance to requested altitude ten minutes after departure.  
**POCKET CITY TRANSITION (OOM5.PXV):** From over OOM VORTAC via OOM R-207 to WEGEE, then via PXV R-043 to PXV VORTAC.

- NOTE: RADAR required.
- NOTE: Select appropriate localizer/DME frequency/channel prior to departure.
- NOTE: Turbojets accelerate to 250K until reaching 10000, if unable advise ATC.
- NOTE: Assigned to aircraft with a requested altitude of 11000 or above.

NOTE: Chart not to scale.

**HOOSIER FIVE DEPARTURE**  
(OOM5.OOM) 01FEB18

INDIANAPOLIS, INDIANA  
INDY SOUTH GREENWOOD (HFY)