

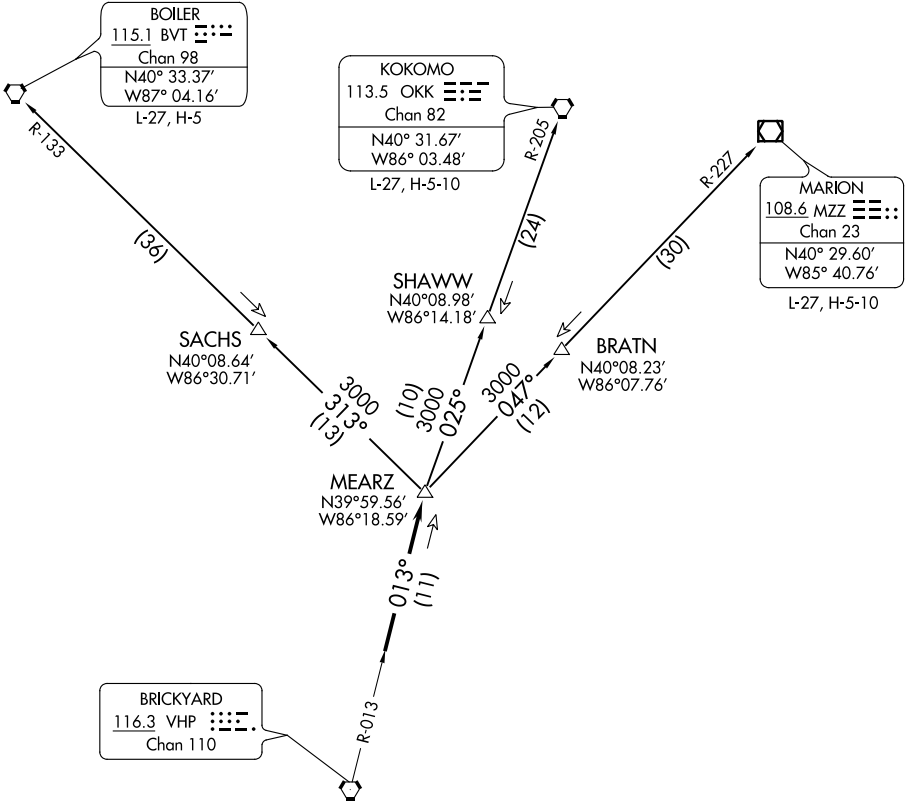
(MEARZ6.MEARZ) 18032  
**MEARZ SIX DEPARTURE**

AL-6614 (FAA)

INDY SOUTH GREENWOOD (HF'Y)  
 INDIANAPOLIS, INDIANA

**TOP ALTITUDE:  
 ASSIGNED BY ATC**

AWOS-3P  
 118.525  
 INDIANAPOLIS DEP CON  
 124.95 317.8



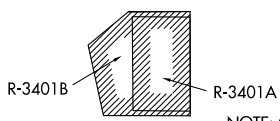
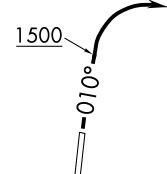
EC-2. 15 AUG 2019 to 12 SEP 2019

EC-2. 15 AUG 2019 to 12 SEP 2019

**TAKEOFF MINIMUMS**  
 Rwy 1, 19: Standard.

- NOTE: RADAR required.
- NOTE: Select appropriate localizer/DME frequency/channel prior to departure.
- NOTE: Turbojets accelerate to 250K until reaching 10000, if unable advise ATC.
- NOTE: Assigned to aircraft with a requested altitude of 11000 or above.

(NARRATIVE ON FOLLOWING PAGE)



NOTE: Chart not to scale.

**MEARZ SIX DEPARTURE**  
 (MEARZ6.MEARZ) 01FEB18

INDIANAPOLIS, INDIANA  
 INDY SOUTH GREENWOOD (HF'Y)