

(PADRZ2.PADRZ) 17341

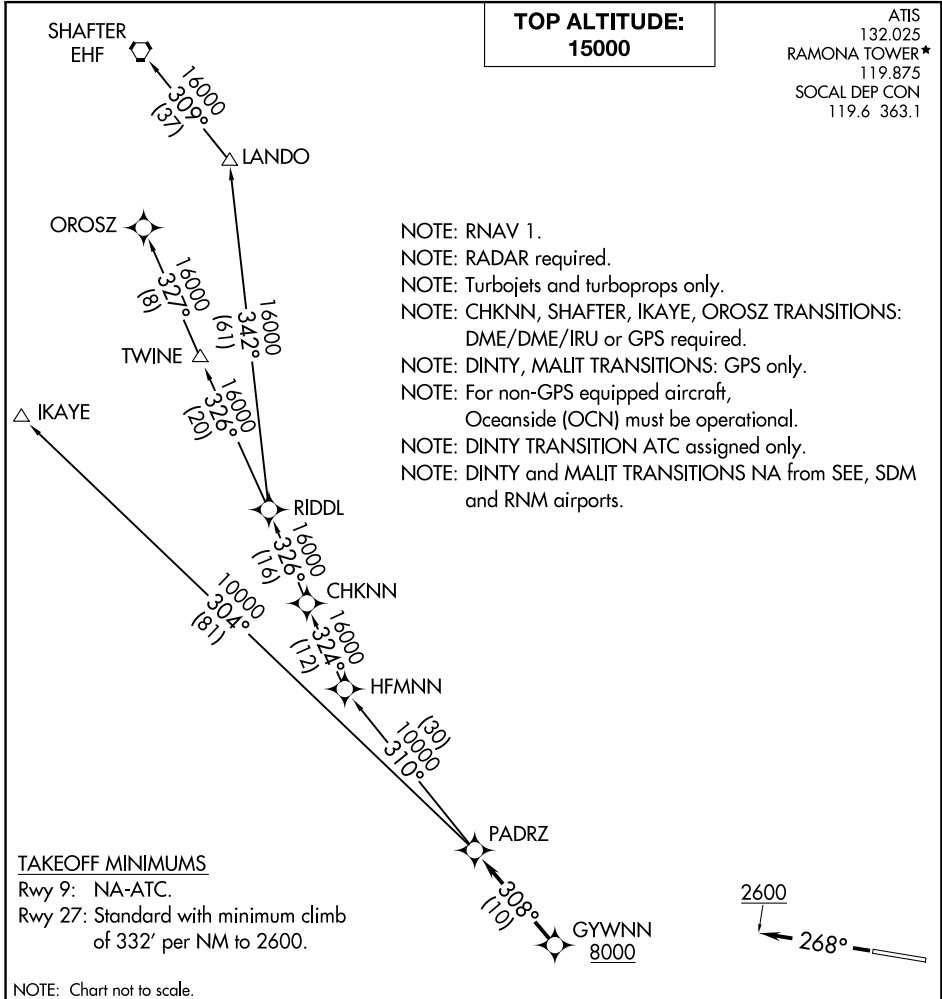
PADRZ TWO DEPARTURE (RNAV)

AL-6667 (FAA)

RAMONA (RNM)
RAMONA, CALIFORNIA

TOP ALTITUDE:
15000

ATIS
132.025
RAMONA TOWER*
119.875
SOCAL DEP CON
119.6 363.1



SW-3, 15 AUG 2019 to 12 SEP 2019

SW-3, 15 AUG 2019 to 12 SEP 2019

DEPARTURE ROUTE DESCRIPTION

TAKEOFF RUNWAY 27: Climb heading 268° to 2600, expect vectors to cross GYWNN at or above 8000, then on track 308° to PADRZ, thence. . . .

. . . .on (transition). Maintain 15000. Expect higher altitude 10 minutes after departure.

CHKNN TRANSITION (PADRZ2.CHKNN)

IKAYE TRANSITION (PADRZ2.IKAYE)

OROSZ TRANSITION (PADRZ2.ROSOZ)

SHAFTER TRANSITION (PADRZ2.EHF)

PADRZ TWO DEPARTURE (RNAV)

(PADRZ2.PADRZ) 07DEC17

RAMONA, CALIFORNIA
RAMONA (RNM)