

APP CRS	Rwy Idg	N/A
239°	TDZE	N/A
	Apt Elev	1395

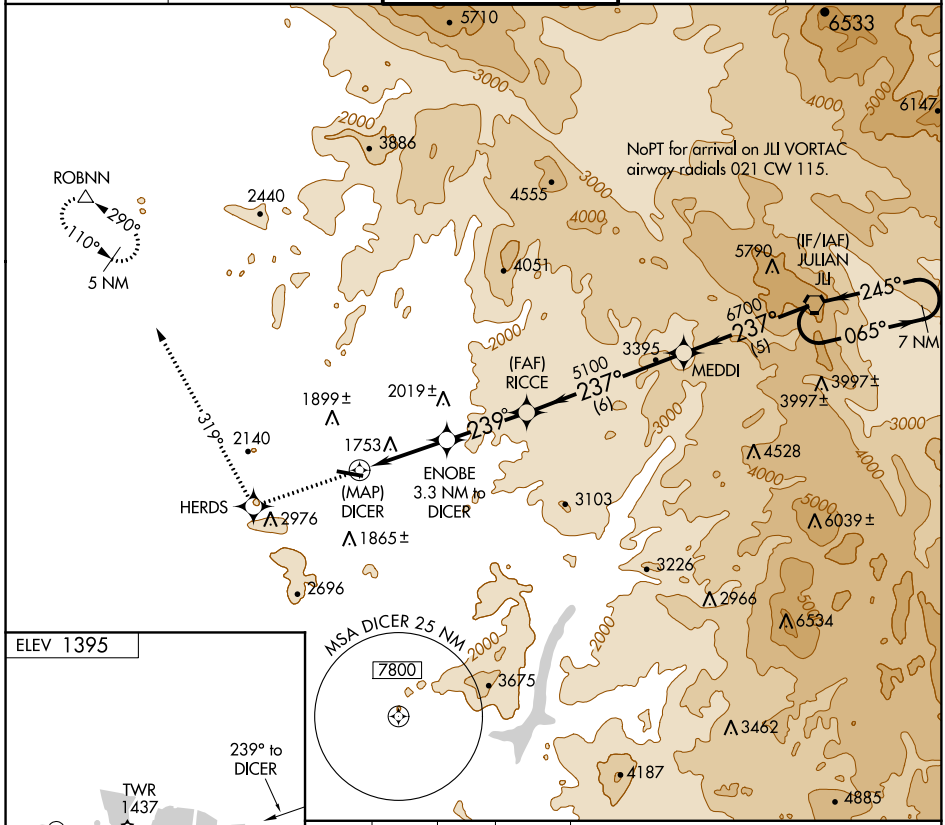
RNAV (GPS)-B

RAMONA (R.NM)

▽ DME/DME RNP-0.3 NA.
▲ Circling NA north of Rwy 9-27.
 When local altimeter setting not received, use Gillespie Field altimeter setting and increase all MDA 180 feet.

MISSED APPROACH: Climb to 5000 direct HERDS and via track 319° to ROBNN and hold.

ATIS 132.025	SOCAL APP CON 132.2 269.1	RAMONA TOWER ★ 119.875 (CTAF) 0	GND CON 121.65	UNICOM 122.95
------------------------	-------------------------------------	--	--------------------------	-------------------------



	5000	HERDS	IR 319°	ROBNN	JLI VORTAC	7 NM Holding Pattern
		DICER	ENOBE 3.3 NM to DICER	RICCE 5100	MEDDI 6700	JLI VORTAC 7700
			3.3 NM	3 NM	6 NM	5 NM
CATEGORY	A	B	C	D		
CIRCLING	2780-1¼ 1385 (1400-1¼)	2780-1½ 1385 (1400-1½)	2780-3 1385 (1400-3)	NA		

SW-3, 15 AUG 2019 to 12 SEP 2019

SW-3, 15 AUG 2019 to 12 SEP 2019