

VORTAC JLI <b>114.0</b> Chan <b>87</b>	APP CRS <b>234°</b>	Rwy Idg TDZE Apt Elev <b>1395</b>	<b>N/A</b> <b>N/A</b>
--	------------------------	---	--------------------------

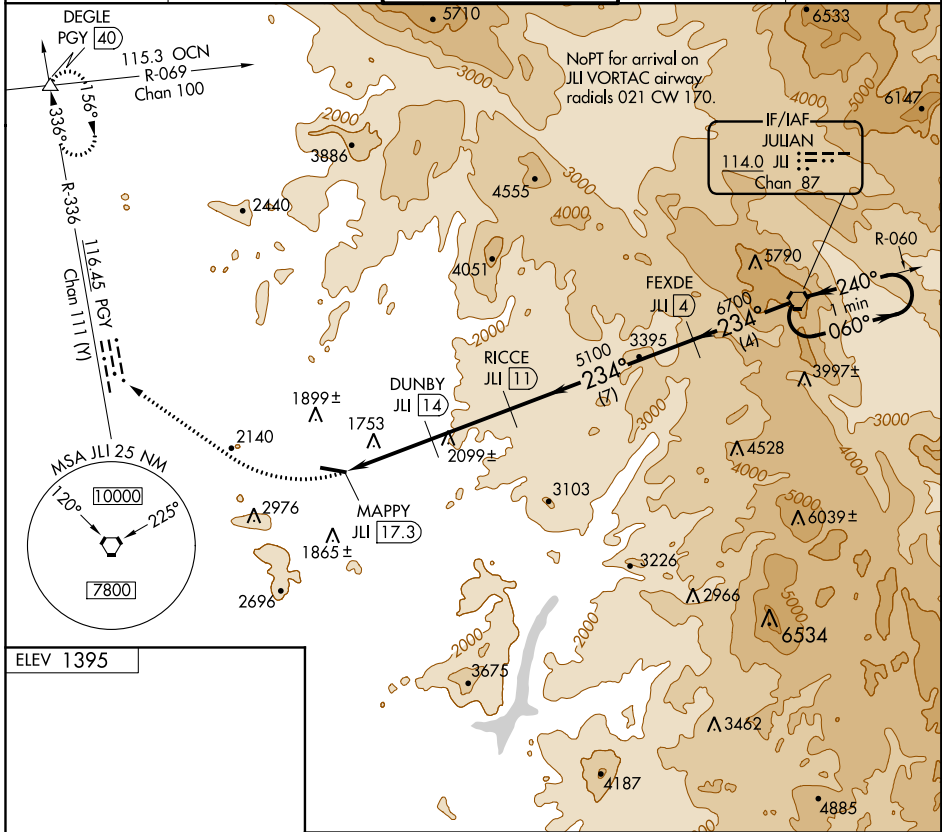
# VOR/DME-A

RAMONA (RNM)

**⚠** Circling NA north of Rwy 9-27.  
When local altimeter setting not received, use Gillespie Field altimeter setting and increase all MDA 180 feet.

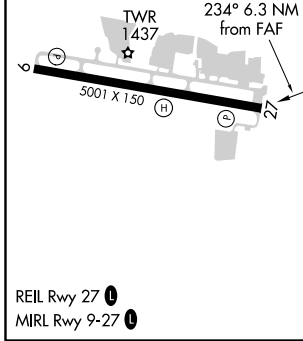
MISSED APPROACH: Climbing right turn to 5000 via heading 290° and PGY VORTAC R-336 to DEGLE/PGY 40 DME and hold.

ATIS <b>132.025</b>	SOCAL APP CON <b>132.2 269.1</b>	<b>RAMONA TOWER ★</b> <b>119.875 (CTAF) ①</b>	GND CON <b>121.65</b>	UNICOM <b>122.95</b>
------------------------	-------------------------------------	--	--------------------------	-------------------------



SW-3, 15 AUG 2019 to 12 SEP 2019

SW-3, 15 AUG 2019 to 12 SEP 2019



5000 hdg 290° PGY R-336 DEGLE △	One Minute Holding Pattern JLI VORTAC			
	MAPPY JLI 17.3 DUNBY JLI 14 RICCE JLI 11 FEXDE JLI 4	3900 5100 6700	234° → ← 240°	060° → ← 240°
CATEGORY CIRCLING	A 2580-1¼ 1185 (1200-1¼)	B 2580-1½ 1185 (1200-1½)	C 2580-3 1185 (1200-3)	D NA