

WAAS CH <b>82426</b>	APP CRS <b>182°</b>	Rwy Idg TDZE <b>476</b>	<b>7000</b>
<b>W18A</b>		Apt Elev <b>476</b>	

# RNAV (GPS) RWY 18

CLARK RGNL (JVY)

RNP APCH.

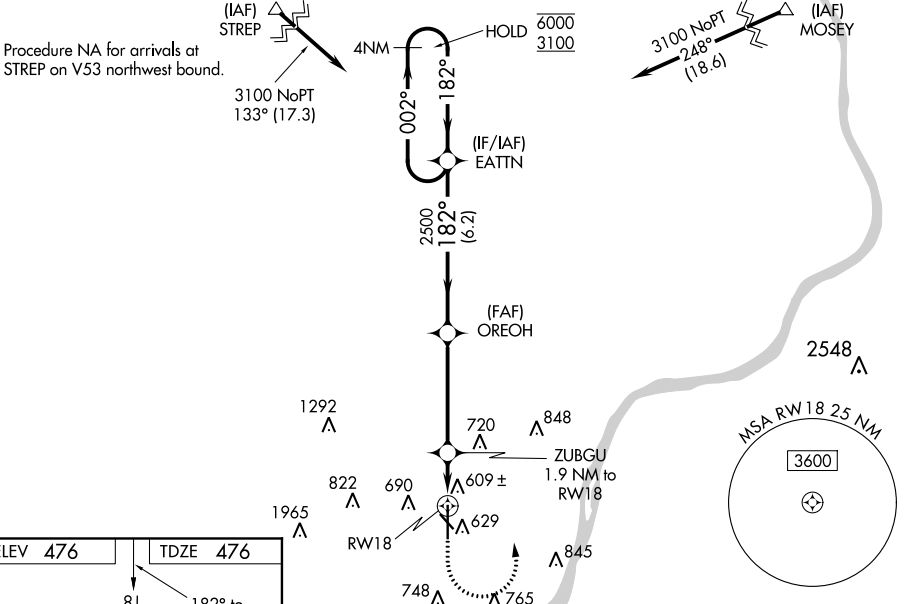
**⚠** Circling NA for Cat D southwest of Rwy 14 and 36. Circling Rwy 14, 32 NA at night. Baro-VNAV and VDP NA when using Louisville Muhammad Ali Intl altimeter setting. For uncompensated Baro-VNAV systems, LNAV/VNAV NA below -15°C or above 54°C. For inop ALS, increase LNAV/VNAV visibility to 1 SM. When local altimeter setting not received, use Louisville Muhammad Ali Intl altimeter setting; increase all DAs 30 feet and LNAV/VNAV visibility 1/8 SM; increase all MDAs 40 feet, LNAV visibility Cats C and D 1/8 SM and Circling visibility Cat C 1/4 SM. For inop ALS when using Louisville Muhammad Ali Intl altimeter setting, increase LNAV/VNAV visibility to 1 1/8 SM.

MALSR



**MISSED APPROACH:**  
Climb to 900 then climbing left turn to 3100 direct EATTN and hold.

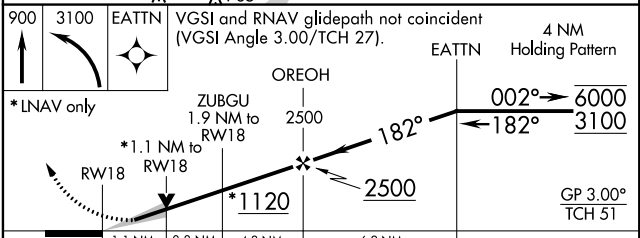
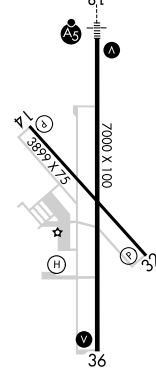
AWOS-3 <b>118.575</b>	LOUISVILLE APP CON <b>132.075 327.0</b>	CLNC DEL <b>118.05</b>	UNICOM <b>122.7 (CTAF) 0</b>
--------------------------	--	---------------------------	---------------------------------



EC-2, 15 AUG 2019 to 12 SEP 2019

EC-2, 15 AUG 2019 to 12 SEP 2019

ELEV 476	TDZE 476
----------	----------



CATEGORY	A	B	C	D
LPV DA		676-1/2	200 (200-1/2)	
LNAV/VNAV DA		850-5/8	374 (400-5/8)	
LNAV MDA	860-1/2	384 (400-1/2)	860-5/8	384 (400-5/8)
<b>C</b> CIRCLING	1000-1 524 (600-1)	1040-1 564 (600-1)	1060-1 1/2 584 (600-1 1/2)	1100-2 624 (700-2)

REIL Rwy 14, 32  
REIL Rwy 18, 36  
MIRL Rwy 14-32, 18-36