

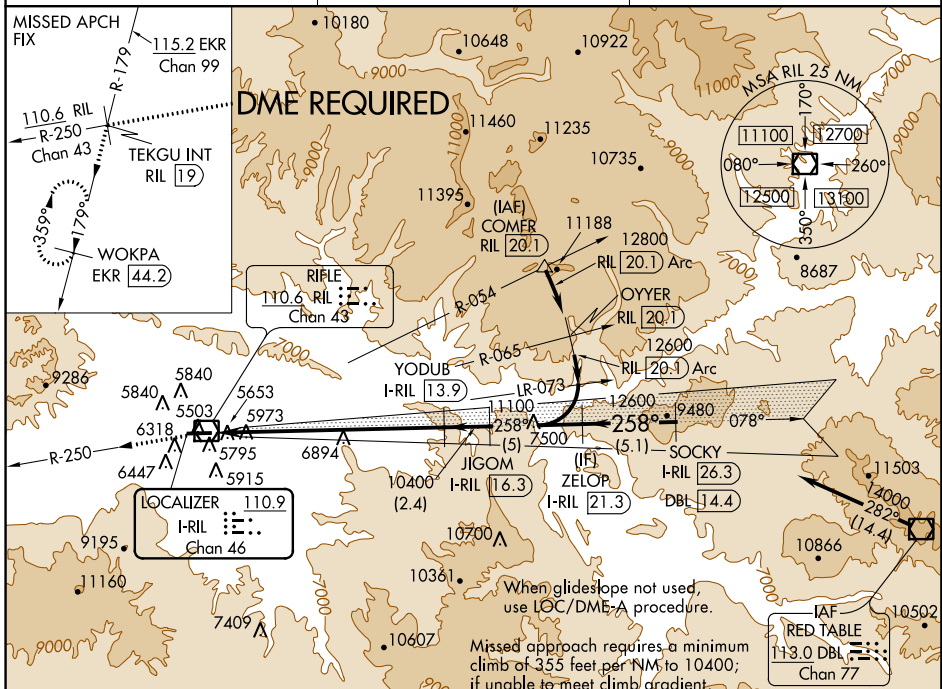
LOC/DME I-RIL <b>110.9</b> Chan 46	APP CRS <b>258°</b>	Rwy Idg TDZE Apt Elev	<b>7000</b> <b>5537</b> <b>5537</b>
--	------------------------	-----------------------------	---

# ILS RWY 26

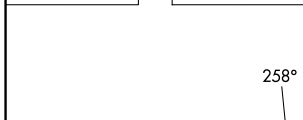
RIFLE GARFIELD COUNTY (RIL)

<p>Visibility reduction by helicopters NA. Use I-RIL DME when on localizer course. DME required. Circling not authorized.</p>	<p>ODALS</p>	<p>MISSED APPROACH: Climb to 13000 on RIL VOR/DME R-250 to TEKGU INT/RIL 19 DME and on EKR VOR/DME R-179 to WOKPA/EKR 44.2 DME and hold.</p>
---	--------------	--

ASOS <b>135.275</b>	DENVER CENTER <b>134.95 327.075</b>	UNICOM <b>122.8 (CTAF)</b>
------------------------	--	-------------------------------



ELEV 5537	TDZE 5537
-----------	-----------



	↑ 13000	TEKGU INT RIL 19	EKR R-179	WOKPA EKR 44.2	JIGOM I-RIL 16.3	ZELOP I-RIL 21.3
		12.6 NM	2.4 NM	5 NM		
CATEGORY	A	B	C	D		
S-ILS 26	6800-4	1263 (1300-4)		NA		

SW-1, 15 AUG 2019 to 12 SEP 2019

SW-1, 15 AUG 2019 to 12 SEP 2019