

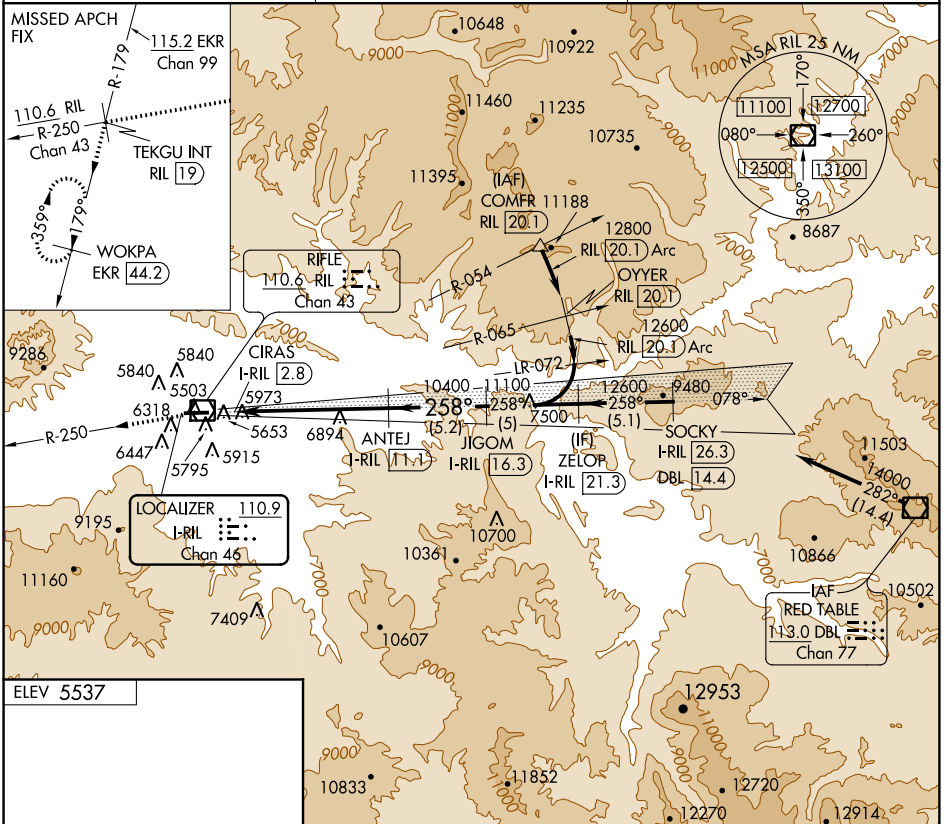
LOC/DME I-RIL 110.9 Chan 46	APP CRS 258°	Rwy Idg TDZE Apt Elev 5537	N/A N/A
---	------------------------	--	--------------------------

LOC/DME-A

RIFLE GARFIELD COUNTY (R.I.L.)

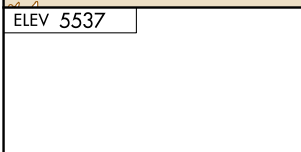
⚠ Visibility reduction by helicopters: NA. Use I-RIL DME when on localizer course. Circling not authorized at night south of Rwy 8-26.
⚠ -15°C
⚠ MISSED APPROACH: Climb to 13000 on RIL VOR/DME R-250 to TEKGU INT/RIL 19 DME and on EKR VOR/DME R-179 to WOKPA/EKR 44.2 DME and hold, continue dimb-in-hold to 13000.

ASOS 135.275	DENVER CENTER 134.95 327.075	UNICOM 122.8 (CTAF)
------------------------	--	-------------------------------

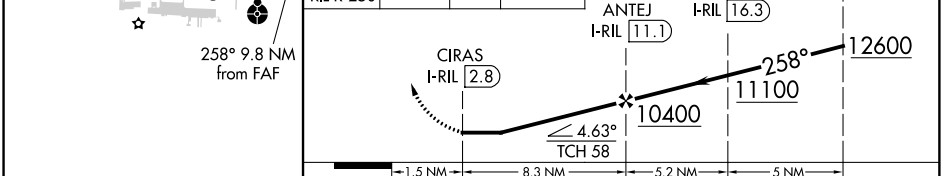


SW-1, 15 AUG 2019 to 12 SEP 2019

SW-1, 15 AUG 2019 to 12 SEP 2019



13000 ↑ RIL R-250	TEKGU INT RIL 19	EKR R-179	WOKPA EKR 44.2	VGSI and descent angles not coincident (VGSI Angle 3.60/TCH 58).	ZELOP I-RIL 21.3
-------------------------	---------------------	--------------	-------------------	---	---------------------



CATEGORY	A	B	C	D
CIRCLING	7780-1¾	2243 (2300-1¾)	7780-3 2243 (2300-3)	NA

RIFLE, COLORADO
 Amdt 9A 17AUG17
 HIRL Rwy 8-26
 REL Rwy 8 and 26

39°32'N-107°44'W

RIFLE GARFIELD COUNTY (R.I.L.)
LOC/DME-A