

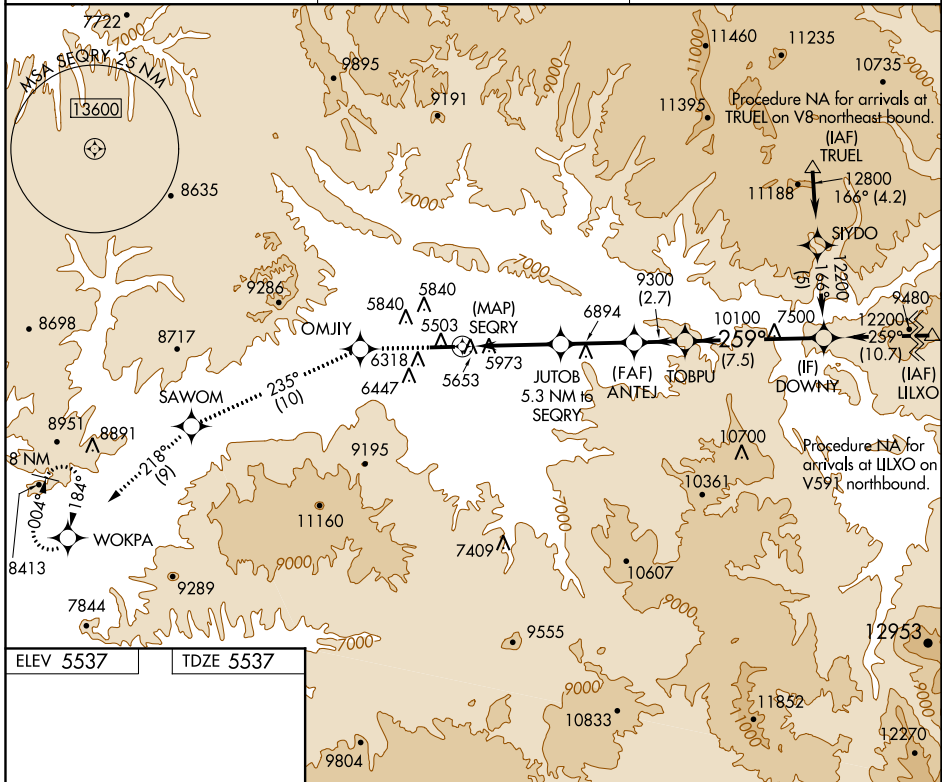
APP CRS	Rwy Idg	7000
259°	TDZE	5537
	Apt Elev	5537

RNAV (GPS) W RWY 26

RIFLE GARFIELD COUNTY (R.I.L.)

<p>DME/DME RNP-0.3 NA. Visibility reduction by helicopters NA. Circling not authorized at night south of Rwy 8-26. Inoperative table does not apply.</p>	<p>MISSED APPROACH: Climb to 13000 direct OMJIY and on track 235° to SAWOM and on track 218° to WOKPA and hold, continue climb-in-hold to 13000.</p>
--	--

ASOS 135.275	DENVER CENTER 134.95 327.075	UNICOM 122.8 (CTAF)
------------------------	--	-------------------------------



SW-1, 15 AUG 2019 to 12 SEP 2019

SW-1, 15 AUG 2019 to 12 SEP 2019

ELEV 5537	TDZE 5537
-----------	-----------

HIRL Rwy 8-26

REIL Rwy 8 and 26

13000	OMJIY	tr 235°	SAWOM	tr 218°	WOKPA	TOBPU	DOWNNY
	SEQRV	JUTOB 3.7 NM to SEQRV	ANTEJ 5.3 NM to SEQRV	TOBPU	DOWNNY		
		3.58° TCH 58					
		7760	9300	10100	12200		
		0.5	3.7 NM	1.6 NM	4 NM	2.7 NM	7.5 NM
CATEGORY	A	B	C	D			
LNAV MDA	7180-1¼ 1643 (1700-1¼)	7180-1½ 1643 (1700-1½)	7180-3 1643 (1700-3)	NA			
CIRCLING	7180-1¼ 1643 (1700-1¼)	7180-1½ 1643 (1700-1½)	7180-3 1643 (1700-3)	NA			