

WAAS CH 86711 W15A	APP CRS 146°	Rwy Idg TDZE Apt Elev	5001 10 10
--	------------------------	-----------------------------	---------------------------------------

RNAV (GPS) RWY 15

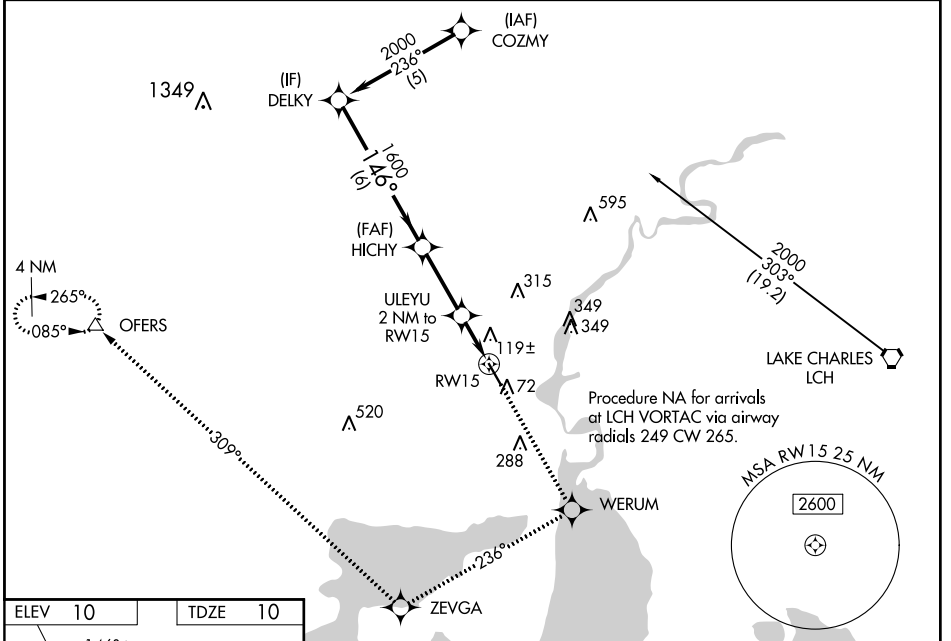
SOUTHLAND FIELD (U XL)

⚠ Inoperative table does not apply to LNAV/VNAV. Baro-VNAV NA when using Lake Charles Rgnl altimeter setting. For uncompensated Baro-VNAV systems, LNAV/VNAV NA below -15°C (3°F) or above 48°C (118°F). DME/DME RNP-0.3 NA. Visibility reduction by helicopters NA. When local altimeter setting not received, use Lake Charles Rgnl altimeter setting and increase all DA 19 feet, all MDA 20 feet and LPV visibility ¼ mile all Cats. VDP NA when using Lake Charles Rgnl altimeter setting.

ODALS

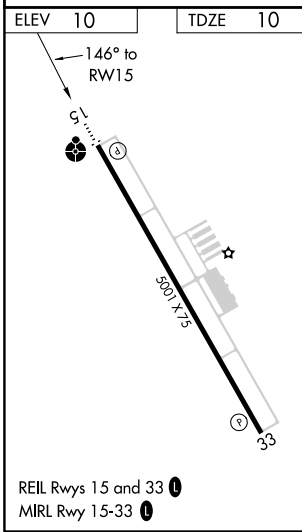
MISSED APPROACH: Climb to 2500 direct WERUM and via 236° track to ZEVGA and via 309° track to OFERS and hold.

AWOS-3PT 118.175	LAKE CHARLES APP CON ★ 119,35 282.3	UNICOM 122.8 (CTAF) 0
----------------------------	---	---------------------------------



SC-4, 15 AUG 2019 to 12 SEP 2019

SC-4, 15 AUG 2019 to 12 SEP 2019



Procedure Turn NA	2500	WERUM	tr 236°	ZEVGA	tr 309°	OFERS
	Δ	Δ	Δ	Δ	Δ	Δ
*LNAV only						
DELKY 2000 GP 3.00° TCH 40 HICHY ULEYU 2 NM to RW15 *1.1 NM to RW15 *680 RW15 VGS1 and RNAV glidepath not coincident (VGS1 Angle 3.00/TCH 50). 6 NM 2.8 NM 0.9 1.1						
CATEGORY	A	B	C	D		
LPV DA	309-1		299 (300-1)			
LNAV/VNAV DA	419-1½		409 (500-1½)			
LNAV MDA	380-¾		370 (400-¾)		380-1¼ 370 (400-1¼)	
CIRCLING	420-1	520-1	520-1½	640-2		
	410 (500-1)	510 (600-1)	510 (600-1½)	630 (700-2)		