

WAAS CH 99610 W33A	APP CRS 326°	Rwy Idg TDZE Apt Elev	5001 10 10
--	------------------------	-----------------------------	---------------------------------------

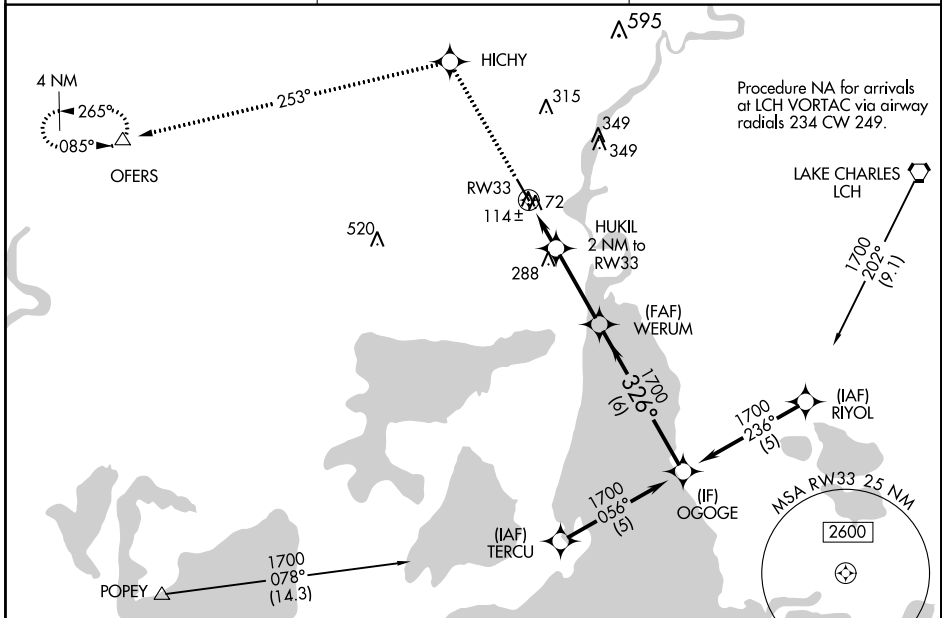
RNAV (GPS) RWY 33

SOUTHLAND FIELD (U XL)

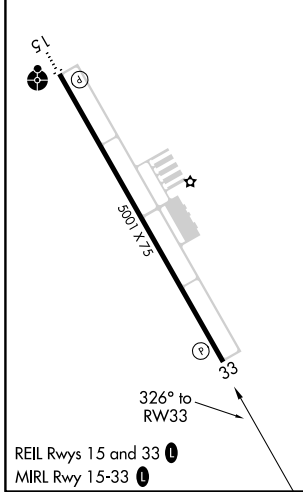
⚠ Baro-VNAV NA when using Lake Charles Rgnl altimeter setting. For uncompensated Baro-VNAV systems, LNAV/VNAV NA below -15°C (5°F) or above 49°C (120°F).
⚠ DME/DME RNP-0.3 NA. Visibility reduction by helicopters NA. When local altimeter setting not received, use Lake Charles Rgnl altimeter setting and increase all DA 19 feet, all MDA 20 feet and LNAV/VNAV visibility ¼ mile all Cats.

MISSED APPROACH: Climb to 2500 direct HICHY and via 253° track to OFERS and hold.

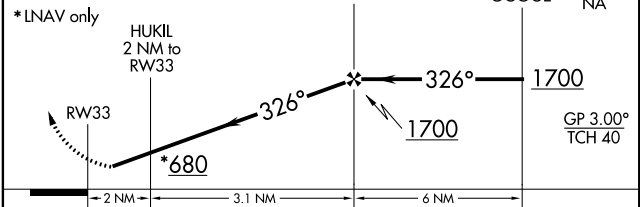
AWOS-3PT 118.175	LAKE CHARLES APP CON * 119.35 282.3	UNICOM 122.8 (CTAF) 0
----------------------------	---	---------------------------------



ELEV 10	TDZE 10
---------	---------



2500	HICHY	tr 253°	OFERS	VGSI and RNAV glidepath not coincident (VGSI Angle 3.00/TCH 50).
------	-------	---------	-------	--



CATEGORY	A	B	C	D
LPV DA		348-1¼	338 (400-1¼)	
LNAV/VNAV DA		384-1¼	374 (400-1¼)	
LNAV MDA		380-1 370 (400-1)		380-1¼ 370 (400-1¼)
CIRCLING	420-1 410 (500-1)	520-1 510 (600-1)	520-1½ 510 (600-1½)	640-2 630 (700-2)

SC-4, 15 AUG 2019 to 12 SEP 2019

SC-4, 15 AUG 2019 to 12 SEP 2019